

Different Effects on Hepatic Lipid Metabolism of Low Carbohydrate Diet on Obese and Non-Obese Mice

Kadowaki S¹ and Kaburagi T^{1,2*}

¹Graduate School of Sports and Health Science, Daito Bunka University, Japan

²Department of Health Science, Faculty of Sports and Health Sciences, Daito Bunka University, Japan

***Corresponding author:** Tomoko Kaburagi, Department of Health Science, Faculty of Sports and Health Sciences, Daito Bunka University, 560 Iwadono, Higashi-matsuyama, Saitama 355-8501, Japan, Tel: +81-493-31-1553; E-mail: t-kabu@ic.daito.ac.jp

Research Article

Volume 2 Issue 2

Received Date: April 17, 2017

Published Date: May 04, 2017

DOI: 10.23880/doi-16000156

Abstract

Aim: The safety and efficacy of a low-carbohydrate (LC) diet in obese and non-obese conditions are not fully understood. This study investigated the effects of a moderate LC diet (40% carbohydrate diet) on metabolic conditions in obese and non-obese mice using hepatic mRNA expression profiles and protein expression of metabolic-related enzymes.

Methods: C57BL/6J male mice were fed an eight-week high-fat diet to induce obesity. Non-obese mice were fed a control diet for the same period. Then, both the obese mice and non-obese mice were fed an LC diet (PFC energy ratio: 40, 16, 44) and control diet (PFC energy ratio: 20, 16, 64) for 13 weeks.

Results: The obese mice on the LC diet had significantly lower bodyweight gain and visceral adipose tissue weight than those that were on the control diet. In the hepatic mRNA expression metabolic profiles, obese mice on the LC diet had increased *Sirt1* expression and decreased *Fabp4*, *Gpx1*, and *Sod1* expression. In addition, obese mice on the LC diet had significantly up regulated acetyl-CoA carboxylase (ACC) phosphorylation than those on the control diet. In the non-obese mice, there were no differences between mice on the LC diet and those on the control diet; however, the non-obese mice on the LC diet tended to have decreased phosphorylated ACC and AMP-activated protein kinase (AMPK).

Conclusion: The effects of an LC diet varied according to the state of obesity at the time of implementation, suggesting that up regulated lipid metabolism occurs only in obese conditions.

Keywords: Low-Carbohydrate Diet; Obese Mice; Phosphorylated Acetyl-Coa Carboxylase; Metabolism

Introduction

The effects and safety of a low-carbohydrate (LC) diet have been studied extensively [1-5]. Most of the previous studies have specifically focused on obese and diabetic conditions, demonstrating the effects of an LC diet on weight loss, and blood glucose and lipid level regulation [6-9]. Conversely, there have also been studies investigating the negative health effects of an LC diet, such as increase of oxidative stress [10], as well as impaired insulin and glycemic responses [11].

Long-term implementation of an LC diet increases the risk of arteriosclerotic disease [12,13], all-cause mortality [13], and weight reduction [9,11]. Given the differences in these previous reports, there is speculation regarding the association of these disorders with obese conditions. In obese conditions, adipocyte hypertrophy causes changes in adipocytokines [14], and abnormality occurs in glucose and lipid metabolism [15]. In non-obese conditions, many of the cases had normal metabolic states. Therefore, it is doubtful that an LC diet in non-obese conditions will produce the same changes observed in previous studies targeting obese

conditions [6-9]. However, in recent years, LC diets have become popular and have been advertised by the media as a diet therapy for prevention of aging and obesity, and health maintenance regardless of obese conditions [16]. However, the effects of an LC diet in non-obese conditions remain poorly understood.

Hepatic lipid metabolism is regulated by gene and protein expressions of factors related to fatty acid synthesis, uptake, and transport, all of which are influenced by obesity [17,18]. AMP-activated protein kinase (AMPK) is a well-known regulator of hepatic lipid metabolism involved in the acetyl-CoA carboxylase (ACC) activation loop with phosphorylation at Thr172 in the liver [18-20]. In its activated state, AMPK phosphorylates ACC at Ser79, which down regulates lipid synthesis [21]. AMPK plays a critical role in energy balance through gene expression [21]. The high-fat diet (HFD) induces changes in AMPK activation, which is involved in SIRT1/AMPK-mediated signaling, and expression of transcription factors Foxo1 and PGC1alpha. These expressions reduce lipid metabolism and anti-oxidative enzyme expression [22,23].

This phenomenon leads to mitochondrial loss or dysfunction, which can cause the development of metabolic diseases such as insulin resistance and diabetes. A few studies have investigated the effects of an LC diet on the activation of metabolic markers, such as AMPK and Sirt1, in skeletal muscles or adipose tissue [24]. However, little is known about the effect of an LC diet on hepatic metabolism and oxidative function.

In our previous report using non-obese mice, an LC diet was shown to influence increments of oxidative stress by reduction of hepatic SOD activity, which may affect the development of various diseases. In the present study, non-obese mice and HFD-induced mice were used to determine the effects of an LC diet according to difference in obesity conditions, including oxidative stress and metabolic state in the liver.

Material and Methods

Materials

The following antibodies were used for western blot analysis: anti-AMPK α (#5832), anti-p-AMPK (#2535), anti-ACC (#3662) and anti-p-ACC (#3661) from Cell Signaling Technology (Danvers, MA, USA), and anti- β acting HRP conjugate (PM053-7) from Medical and Biological Laboratories (Nagoya, Japan). Primer-probe sets for mRNA quantification were purchased from Life Technologies (Carlsbad, CA, USA).

Animals and Diet

Thirty-six 6-week-old male C57BL/6J mice were obtained from Charles River Laboratory, Inc. (Kanagawa, Japan). Mice were randomly housed with

three animals per cage in a 24°C temperature-controlled room with a 12-hour light-dark cycle, with the lights turned on at 21:00. Mice received a control diet (16% fat diet, based on AIN-93G, D10012G; Research Diets, Inc., New Brunswick, NJ, USA) for 1 week during the acclimation period. Obesity was induced using an 8-week high-fat diet (60% fat diet, Research Diets, Inc.).

Non-obese mice were on a control diet during the same period. The obese mice and non-obese mice were sacrificed (n=6 in each group) in part at 8 weeks after initial experimental diet, and the remaining mice were divided into the following two secondary experimental diet groups: an LC diet and a control diet group. The secondary experimental diet groups were fed for 13 weeks and all experimental groups contained 6 mice. The composition of the experimental diet groups is shown in Table 1. The carbohydrate content of the experimental diets was modified using casein as a protein source. The mineral contents were adjusted to the same level in all experimental diet groups. The mice were allowed free access to food and drinking water throughout the acclimation and experimental periods. Individual mouse weights and food consumption rates per cage were recorded twice weekly. This study was approved by the Daito Bunka University Animal Experiment Committee and complied with the guidelines of the Japanese Council on Animal Research at Daito Bunka University in Saitama, Japan.

Table 1: Composition of experimental diets.

	Control	HFD	LC
PFC energy ratio (%)			
Protein	20	20	44
Fat	16	60	16
Carbohydrate	64	16	40
Energy (kcal / g)	4	4	4
Ingredient (g/kg)			
Casein	200	200	396
Cornstarch	397.5	0	198
Maltodextrin 10	132	132	132
Sucrose	100	100	100
cellulose	50	50	50
Soybean oil	70	30	70
Lard	0	216.7	0
Mineral mix S10022G †	35	35	0
Mineral mix S10022C †	0	0	3.5
Calcium carbonate	0	0	12.5
Potassium citrate	0	0	8
Sodium chloride	0	0	2.6
Vitamin mix V10037	10	10	10
L-Cystine	3	3	6
Choline bitartrate	2.5	2.5	2.5
t-Butylthioquinone(mg)	140	140	140

Control: control diet, HFD: high-fat diet, LC: low-carbohydrate diet.

† Research Diet, Inc.

Tissue Sampling

Mice were anaesthetized with diethyl ether and exsanguinated through the orbital cavity. Sera were separated through centrifugation. Immediately after the mice were sacrificed, the livers and epididymal adipose tissues (EATs) were removed and weighted. The livers were homogenized with TBS containing 1% Triton X-100, a protease inhibitor cocktail and phosphatase inhibitors (Roche Applied Science, Mannheim, Germany), and centrifuged at 5000 rpm for 15 minutes. The supernatants were removed and protein concentrations were measured using the BCA protein assay (Thermo Fisher Scientific).

Western Blot Analysis

Proteins were separated with 5-20% gradient SDS-PAGE using the Laemmli buffer system and then transferred to PVDF membranes. After blocking with 5% non-fat dry milk in TBS containing 0.05% Tween 20, the membranes were incubated with primary antibodies, diluted with the blocking buffer, and followed by HRP-conjugated secondary antibodies. Proteins were detected with Western lightning ECL Pro (PerkinElmer, Waltham, MA, USA) using an Image Quant LAS-4000mini (GE Healthcare Life Science, Issaquah, WA, USA).

Total RNA Extraction, cDNA Synthesis, and Real-Time PCR

Total RNA was extracted from the liver was extracted using TRIzol reagent (Invitrogen, Carlsbad, CA, USA), according to the manufacturer's protocol. The purity and concentration of total RNA were measured using a spectrophotometer at 260 and 280 nm. Subsequently, 1µg of total RNA was reverse transcribed using Superscript III reverse transcriptase (Life Technologies). Real-time PCR was carried out with SYBR Green master mix and gene-specific primers (Applied Biosystems, Foster City, CA, USA). Primer sequences are shown Table 2. The 2- $\Delta\Delta$ CT method was used to analyze the relative changes in each gene's

expression, normalized against 18S rRNA expression. All samples were measured twice.

Statistical Analysis

Results are expressed as mean \pm SEM. After a normality test, the statistical analysis was performed using the Student's t test or the Mann-Whitney U test to compare the LC diet and control diet mice. All p values <0.05 were considered statistically significant. All statistical calculations were performed using SPSS version 19.0 (IBM, Armonk, NY, USA).

Results

Obese Mice Condition

To investigate the effects of a moderate LC diet (40% carbohydrate diet) on metabolic conditions in obese and non-obese mice, experiments were designed using HFD-induced obese mice and checked metabolic conditions. HFD-induced obesity in mice is a well-known obese model with dysregulated metabolism of glucose and lipid levels [25-27]. Results indicated that after 8 weeks of experimental diets, the mice on HFD had heavier bodyweights and an accumulation of epididymal adipose tissues (EATs), as compared to the mice on control diet (Figure 1A, Table 3). This study confirmed obese condition using serum biomarkers of HFD; the increase of total cholesterol, LDL-cholesterol, and triglyceride; the lowering of HDL-cholesterol; and the high levels of fasting blood glucose and insulin (Table 4). Next, the study analyzed ACC and AMPK, which play important roles by regulating lipid metabolism in the liver by phosphorylation.

Phosphorylation of ACC (*p*-ACC) and AMPK (*p*-AMPK) were down regulated in obese mice (Figure1B), which indicates that fatty acid metabolism was suppressed. From the above results, this model was used as an obese mouse model for the following experiments. For the non-obese mice, the control diet was given for the same period.

Table 2: Real-time PCR primers used.

gene	abbr.	Forward primer 5'-3' (F)
		Reverse primer 5'-3' (R)
Sirtuin1	Sirt1	F: TGGAGCTGGGGTTTCTGTCTCCTG R: ACGGCTGGAACCTGTCCGGGA
forkhead box O1	Foxo1	F: ACGGGCTGTCTGTCTGTC R: TAAGTGAAGTTTCTCTGTGGTTTC
peroxisome proliferative activated receptor, gamma, coactivator 1 alpha	Pgc1a	F: GCACGAGAAGCGGGAGTCT R: TCACACGGCGCTCTCAAT
Superoxide dismutase 1	Sod1	F: ACCAGTGCAGGACCTCATTTTAA R: AGGTCTCCAACATGCCTCTCTTC
Glutathione peroxidase 1	Gpx1	F: CCTTGCCAACACCCAGTGA R: GGCACACCGGAGACCAAAT
Fatty acid binding protein 4	Fabp4	F: AAGGTGAAGAGCATCATAACCC R: TCACGCCTTTCATAACACATTCC
18S ribosomal RNA	18S	F: AGTTAGCATGCCAGAGTCTCG R: TGCATGGCCGTTCTTAGTTG

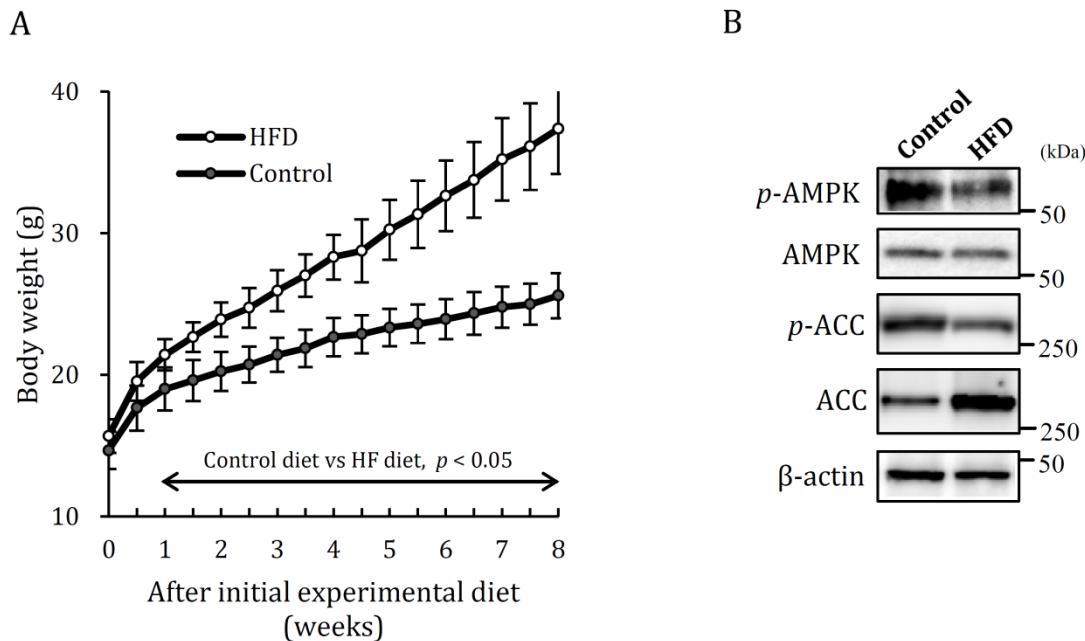


Figure 1: Induction of obese mice by 8 weeks of HFD.

A. Change of body weight. B. Hepatic fatty acid metabolism analyzed on expression of *p*-AMPK and *p*-ACC. HFD: high-fat diet, Control: control diet. Data shown are the mean \pm SEM.

Table 3: Final body weight and EATs weight in mice fed Control and HFD.

	Control (16% Fat)	HFD (60% fat)
Final body weight (g)	25.6 \pm 0.4	37.4 \pm 0.7
EATs / mice (g)	0.3 \pm 0.9	1.8 \pm 0.3 **
EATs/ body weight (mg/g)	13 \pm 3	52 \pm 8 **

Control: control diet, HFD: high-fat diet, EATs: epididymal adipose tissues. Data shown are the mean \pm SEM. ** $p < 0.01$ vs control diet.

Table 4: Levels of serum biochemical markers in mice fed Control and HFD.

		Control (16% Fat)	HFD (60% fat)
AST	(IU/mL)	132 \pm 22	122 \pm 26
ALT	(IU/mL)	30 \pm 4	36 \pm 8
AST / ALT		4.8 \pm 0.9	3.3 \pm 0.2*
T-cho	(mg/dL)	91 \pm 14	151 \pm 11**
TG	(mg/dL)	38 \pm 6	26 \pm 1*
HDL	(mg/dL)	51 \pm 6	73 \pm 1*
FBG	(mg/dL)	100 \pm 9	216 \pm 19**
Insulin	(pg/mL)	444 \pm 60	2047 \pm 301**

Control: control diet, HFD: high-fat diet, AST: aspartate transferase, ALT: alanine transferase, T-cho: total cholesterol, TG: triglycerides, HDL: high density lipoprotein, FBG: fasting blood glucose. Data shown are the mean \pm SEM. * $p < 0.05$, ** $p < 0.01$ vs control diet by Student's-t-test.

Changes in Body Weight and Weight of EATs

In obese mice, body weight and EATs accumulation were inhibited by an LC diet, although the observed significant differences disappeared after 10 weeks

(Figure 2B and Table 5). Conversely, in non-obese mice, the LC diet did not affect body weight and EATs accumulation (Figure 2A and Table 5).

Table 5: Final body weight and weight of EATs in non-obese and obese mice fed LC diet.

	Non-obese mice		Obese mice	
	Control	LC	Control	LC
Final body weight (g)	28.9±2.4	30.5±3.3	37.6±1.6	35.0±1.7
EATs / mice (g)	0.85±0.03	0.73±0.04	1.82±0.04	1.53±0.06*
EATs / body weight (mg /g)	29.1±4.5	24.0±6.8	48.4±2.9	43.5±2.5*

Control: control diet, LC: low-carbohydrate diet, EATs: epididymal adipose tissues. Data shown are the mean ± SEM.

*p < 0.05 vs control diet by Student's-t-test.

Serum Biomarkers

In both the non-obese and obese mice, the LC diet did not affect serum biomarker levels (Table 6).

Unexpectedly, the serum insulin level was high in the obese and non-obese mice on the LC diet. This finding is contrary to previous reports [8,9].

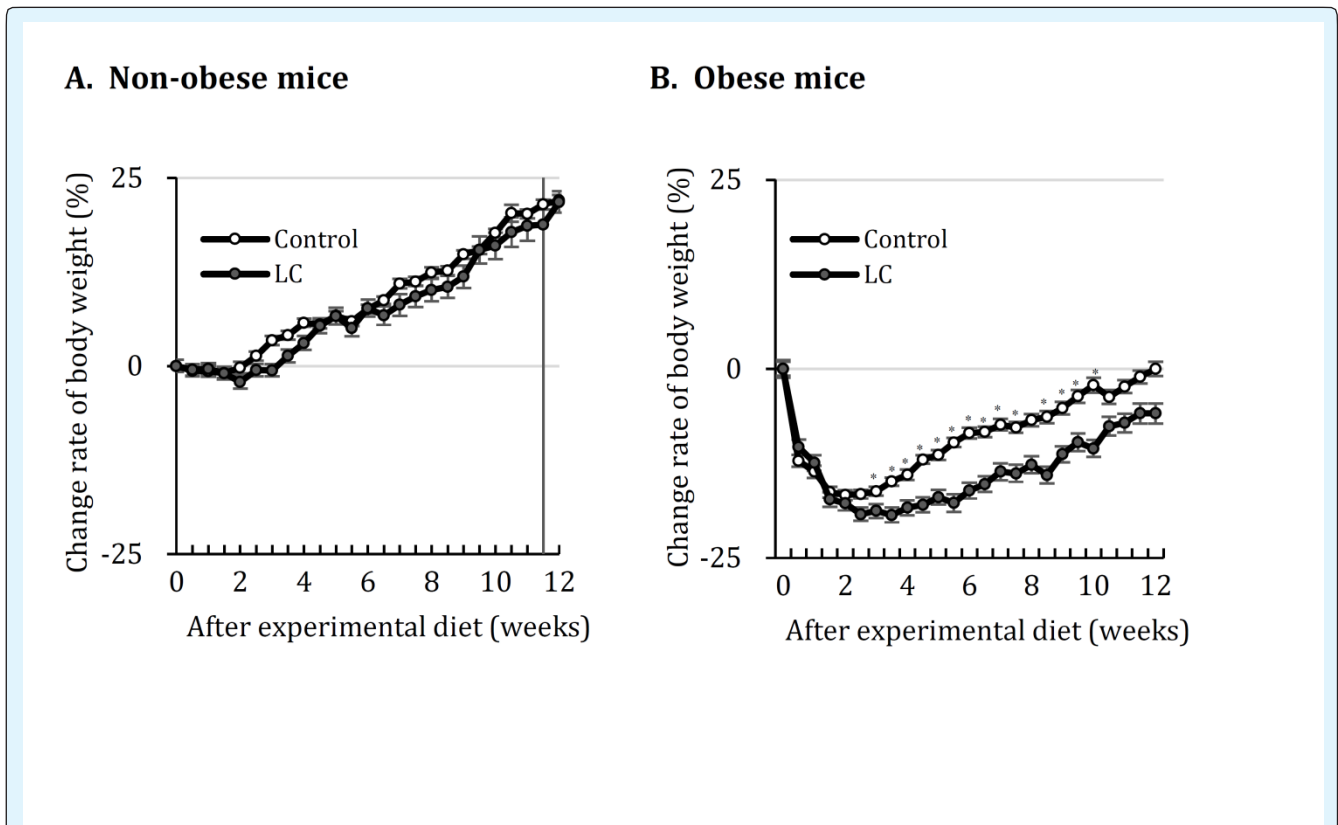


Figure 2: Change rate of body weight in obese and non-obese mice fed LC diet.

A. Non-obese mice. B. Obese mice. Control: control diet, LC: low-carbohydrate diet EATs: epididymal adipose tissues. Data shown are the mean ± SEM. *p < 0.05 vs Control by Student's-t-test.

Table 6: Levels of serum biochemical markers in obese and non-obese mice fed LC diet.

		Non-obese mice		Obese mice	
		Control	LC	Control	LC
AST	(IU/mL)	119 ± 14	207 ± 22	117 ± 23	118 ± 33
ALT	(IU/mL)	22 ± 3	23 ± 5	25 ± 4	33 ± 8
AST / ALT		5.1 ± 0.9	3.9 ± 0.6	4.8 ± 0.9	3.9 ± 1.2
T-Cho	(mg/dL)	117 ± 10	96 ± 35	147 ± 17	140 ± 27
TG	(mg/dL)	38 ± 1	37 ± 4	37 ± 3	32 ± 5
HDL-C	(mg/dL)	64 ± 2	49 ± 8	75 ± 2	71 ± 3
FBG	(mg/dL)	185 ± 29	201 ± 83	246 ± 39	253 ± 42
Insulin	(pg/mL)	613 ± 625	993 ± 937	1366 ± 666	1842 ± 481

Control: control diet, LC: low-carbohydrate diet, AST: aspartate transferase, ALT: alanine transferase, T-cho: total cholesterol, TG: triglycerides, HDL: high density lipoprotein, FBG: fasting blood glucose. Data shown are the mean \pm SEM.

Fatty Acid Metabolism-Related Protein in the Liver

AMPK is known to regulate hepatic lipid metabolism and accumulation [17-19,21,22]. AMPK activated by phosphorylation prevents or reduces liver lipid accumulation via down regulation of ACC by phosphorylation [18-20]. Therefore, in this study, activities of hepatic lipid metabolism were analyzed from phosphorylation of AMPK and ACC. Obese mice on the LC diet had significantly up regulated ACC phosphorylation, in comparison to those on the control diet (Figure 3). In the non-obese mice, there were no differences between the mice on the LC diet and control diet; however, the mice on the LC diet tended to show

down regulated phosphorylation of ACC and AMPK (Figure 3).

Metabolism and Oxidation-Related mRNA Expression in the Liver

In the obese mice, the LC diet decreased hepatic mRNA expression of *Sod1* and *GPX1* related to fatty acid oxidation, and *Fabp4* related to fatty acid synthetic transport. Sirt1, an upstream factor of these genes, had remarkably high expression (Figure 4B). In the non-obese mice, there were no differences in the hepatic mRNA expressions between the mice on the LC diet and the control diet. However, *Sod1* expression tended to be lower in the mice on the LC diet (Figure 4A).

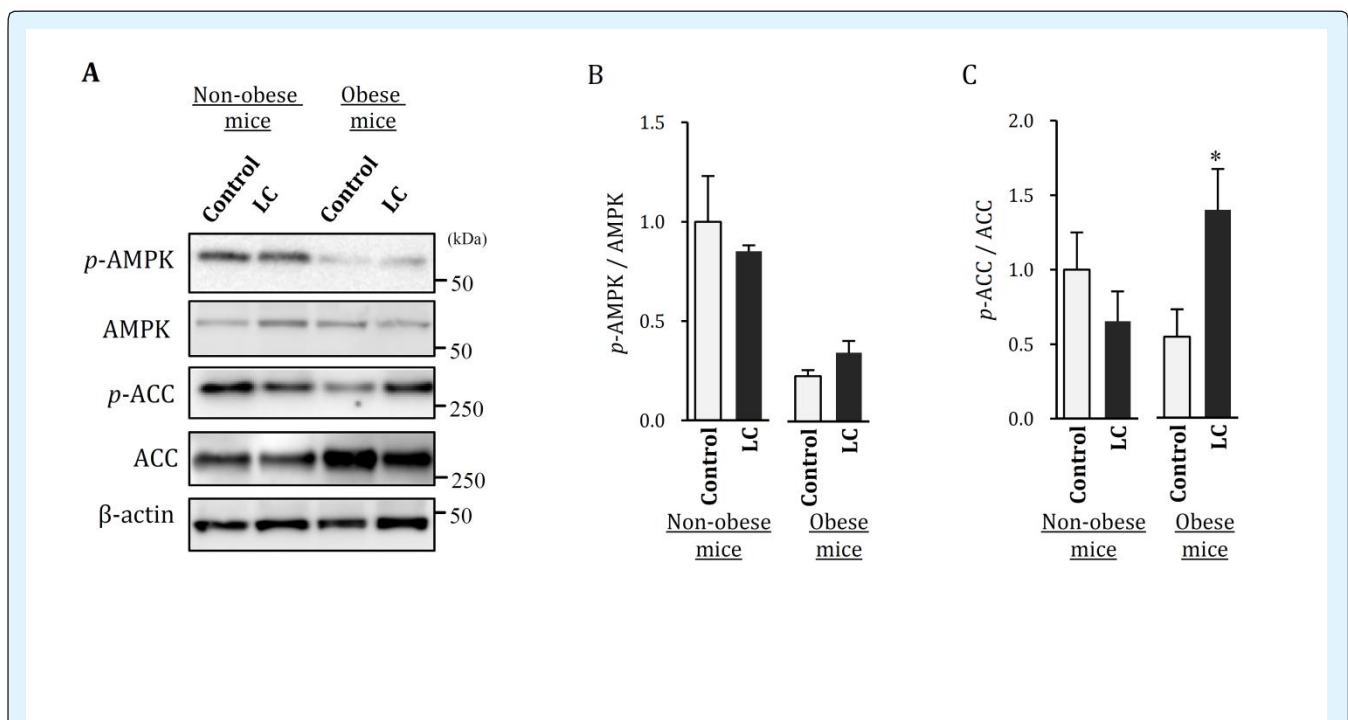


Figure 3: Hepatic fatty acid metabolism analyzed on expression of *p*-AMPK and *p*-ACC in obese and non-obese mice fed LC diet.

- p*-AMPK and *p*-ACC expression were determined by western blot analysis.
- p*-AMPK signal intensity of the bands in the western blot was quantified and shown as a graph.
- p*-ACC signal intensity of the bands in the western blot was quantified and shown as a graph. Control: control diet, LC: low-carbohydrate diet, Data shown are the mean \pm SEM. * $p < 0.05$ vs Control by Student's *t*-test.

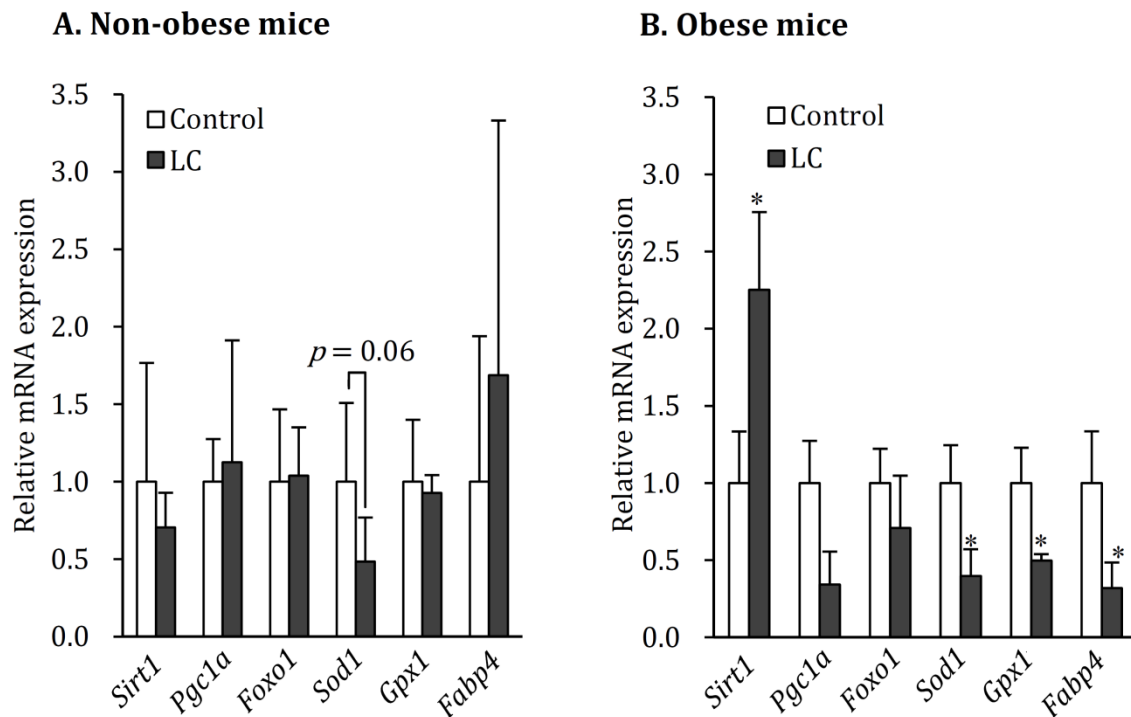


Figure 4: Hepatic mRNA expression in obese and non-obese mice fed LC diet. Control: control diet, LC: low-carbohydrate diet. Data shown are the mean \pm SEM. * $p < 0.05$ vs Control by Mann-whitney U-test.

Discussion

For the first time, this study has demonstrated that the effects of a moderate LC diet vary according to obesity status, with a specific focus on hepatic lipid metabolism. Improvement of lipid metabolism after an LC diet was demonstrated only in obese mice, through regulations of genes and proteins related to lipid metabolism that changed with obesity (Figure 3 and 4). In addition, this study showed a high possibility of oxidative stress increased by an LC diet irrespective of obesity condition (Figure 4). The results also highlight the risks of an LC diet and could lead to the development of safer diet therapy for obesity-related diseases. This study focused on the analysis of hepatic lipid metabolism. Obesity causes abnormal lipid metabolism through changes in fatty acid synthesis and oxidation via dysregulation by AMPK and the Sirt1 co-activated pathway [18,22,23], which are activated by caloric restriction, exercise and antioxidant treatment [28,29]. AMPK inhibits ACC activity by phosphorylation, resulting in the suppression of fatty acid synthesis; this could provide a new strategy for the management of obesity-related liver disease [18,19,21,22]. The experimental obese mice model developed using HFD had significantly up

regulated ACC activities by low phosphorylation, showing an increase in fatty acid synthesis (Figure 1B).

ACC activity was inhibited by the LC diet only in the obese mice. In addition, obesity is known to decrease SIRT1 expression and influences downstream lipogenic genes, such as Pgc1a and Fabp4 [30]. In the obese mice, Sirt1 was markedly increased by the LC diet. Hepatic Fabp4, apogenic gene-associated transportation with up regulation by obesity [31], were also inhibited by the LC diet only in obese mice. These findings suggest that an LC diet could improve lipid metabolism, similar to the effects of exercise, only when administered in conjunction with abnormal obesity symptoms. This notion is supported by the present study, which shows that the LC diet in non-obese mice, as a normal metabolism condition, did not promote lipid metabolism (Figure 3 and 4). Even in previous reports investigating the effects of long-term LC diet adoption in obese subjects, results have demonstrated that LC diets inhibit body weight gain and promote blood glucose control, which leads to improvements in obesity and metabolic disorders [1,9,11].

The effects of the LC diet have generally been focused on obese and diabetic conditions, and the diet has been shown to have a positive effect, such as loss of body weight, and the regulation of blood glucose and lipid levels [6-9]. As previously mentioned, the LC diet is likely to improve obesity and obesity-related diseases. Conversely, in the non-obese mice, there is a tendency for the decrease of both phosphorylated AMPK and ACC as a result of an LC diet (Figure 3), suggesting that the LC diet can increase the risk of hepatic lipid synthesis. The LC diet has also been reported to be involved in metabolism effects depending on age [32,33]. The non-obese mice aged 14 weeks experienced no inhibitory effects of bodyweight by the LC diet. However, our previous study showed an inhibitory effect of bodyweight due to the LC diet in young mice aged 8 weeks (Figure 2A). Further detailed analysis of the effects of an LC diet in the non-obese state, including influence on age and hepatic metabolism, is necessary in the future.

The hepatic gene results demonstrated that antioxidant genes *Sod1* and *Gpx1* were reduced by the LC diet in both the obese and non-obese mice (Figure 4). Down regulation of *Sod1* and *Gpx1* cause oxidative stress, which plays a critical role in the pathogenesis of various diseases? Increased hepatic oxidative stress induces the pathophysiology of the fatty liver [34]. In our previous report, an LC diet was shown to decrease the anti-oxidant enzyme in non-obese conditions [10]. Large longitudinal studies have indicated that long-term intake of an LC diet is associated with an increased cardiovascular disorder involving oxidative stress [12,33]. In addition, studies have proven that LC diets can increase the risk of liver oxidative stress, especially in obese mice. The development of non-alcoholic steatohepatitis is common in obesity [34], and is induced by *Sod1* reduction in the liver accompanied by an increase in other apogenic genes [30]. An LC diet may affect hepatitis episodes; therefore, a more detailed study is needed to better understand LC diet safety, including oxidative stress.

Conclusion

This study demonstrates a new perspective on the effects of an LC diet, which varies according to obesity conditions. When confined to obese conditions, the LC diet is expected to have the same effect as exercise, including weight control, improvement of liver lipid metabolism, and improvement of obesity-related disease via Sirt 1. Further investigation is necessary to better understand influence of LC diet on oxidative stress and its effect in non-obese conditions.

Conflict of Interest

The authors declare that they have no conflicts of interest with the contents of this article.

Author Contributions

TK prepared figures, and wrote draft the manuscript. TK conceived the idea for the project and designed experiments. SK conducted most of the experiments. All authors interpreted the results, commented on the manuscript, and approved submission of the manuscript.

Acknowledgements

We thank Dr. Satoru Oshiro for the great technical advice. This work was supported by the Japan Society for the Promotion of Science (Grant-in-Aid for Scientific Research (C) to T. K. [grant number 15K00885]).

References

1. Astrup A, Meinert Larsen T, Harper A (2004) Atkins and other low-carbohydrate diets: hoax or an effective tool for weight loss? *Lancet* 364(9437): 897-899.
2. Bravata DM, Sanders L, Huang J, Krumholz HM, Olkin I, et al. (2003) Efficacy and safety of low-carbohydrate diets: a systematic review. *JAMA* 289(14): 1837-1850.
3. Fields H, Ruddy B, Wallace MR, Shah A, Millstine D (2016) Are Low-Carbohydrate Diets Safe and Effective? *J Am Osteopath Assoc* 116(12): 788-793.
4. Halton TL, Hu FB (2004) The effects of high protein diets on thermogenesis, satiety and weight loss: a critical review. *J Am Coll Nutr* 23(5): 373-385.
5. Pawlak R (2013) Low-carbohydrate, high-protein diets for management of type 2 diabetes. *Am J Clin Nutr* 98(1): 247-248.
6. Shai I, Schwarzfuchs D, Henkin Y, Shahar DR, Witkow S, et al. (2008) Weight loss with a low-carbohydrate, Mediterranean, or low-fat diet. *N Engl J Med* 359(3): 229-241.
7. Pesta DH, Samuel VT (2014) A high-protein diet for reducing body fat: mechanisms and possible caveats. *Nutr Metab (Lond)* 11(1): 53.
8. Layman DK, Boileau RA, Erickson DJ, Painter JE, Shiue H, et al. (2003) A reduced ratio of dietary carbohydrate to protein improves body composition and blood lipid profiles during weight loss in adult women. *J Nutr* 133(2): 411-417.
9. Rolland C, Hession M, Murray S, Wise A, Broom I (2009) Randomized clinical trial of standard dietary treatment versus a low-carbohydrate/high-protein

- diet or the Lighter Life Programme in the management of obesity. *J Diabetes* 1(3): 207-217.
10. Kadowaki S, Kaburagi T (2016) Effect of a Low Carbohydrate-High Protein Diet in Non-obese Mice. *The Japanese Journal of Nutrition and Dietetics* 74(3): 51-59.
 11. Axen KV, Axen K (2006) Very low-carbohydrate versus isocaloric high-carbohydrate diet in dietary obese rats. *Obesity (Silver Spring)* 14(8): 1344-1352.
 12. Lagiou P, Sandin S, Lof M, Trichopoulos D, Adami HO, et al. (2012) Low carbohydrate-high protein diet and incidence of cardiovascular diseases in Swedish women: prospective cohort study. *BMJ* 344: e4026.
 13. Noto H, Goto A, Tsujimoto T, Noda M (2013) Low-carbohydrate diets and all-cause mortality: a systematic review and meta-analysis of observational studies. *PLoS One* 8(1): e55030.
 14. Fontana L, Eagon JC, Trujillo ME, Scherer PE, Klein S (2007) Visceral fat adipokine secretion is associated with systemic inflammation in obese humans. *Diabetes* 56(4): 1010-1013.
 15. Kim JY, Van De Wall E, Laplante M, Azzara A, et al. (2007) Obesity-associated improvements in metabolic profile through expansion of adipose tissue. *J Clin Invest* 117(9): 2621-2637.
 16. Moyad MA (2004) Fad diets and obesity--Part III: a rapid review of some of the more popular low-carbohydrate diets. *Urol Nurs* 24(5): 442-445.
 17. Kahn BB, Alquier T, Carling D, Hardie DG (2005) AMP-activated protein kinase: ancient energy gauge provides clues to modern understanding of metabolism. *Cell Metab* 1(1): 15-25.
 18. Viollet B, Foretz M, Guigas B, Horman S, Dentin R, et al. (2006) Activation of AMP-activated protein kinases in the liver: a new strategy for the management of metabolic hepatic disorders. *The Journal of Physiology* 574(Pt 1): 41-53.
 19. Srivastava RAK, Pinkosky SL, Filippov S, Hanselman JC, Cramer CT, et al. (2012) AMP-activated protein kinase: an emerging drug target to regulate imbalances in lipid and carbohydrate metabolism to treat cardio-metabolic diseases: Thematic Review Series: New Lipid and Lipoprotein Targets for the Treatment of Cardio-metabolic Diseases. *J Lipid Res* 53(12): 2490-2514.
 20. Carlson CA, Kim KH (1973) Regulation of hepatic acetyl coenzyme A carboxylase by phosphorylation and dephosphorylation. *J Biol Chem* 248(1): 378-380.
 21. Kim J, Yang G, Kim Y, Kim J, Ha J (2016) AMPK activators: mechanisms of action and physiological activities. *Exp Mol Med* 48: e224.
 22. Canto C, Gerhart-Hines Z, Feige JN, Lagouge M, Noriega L, et al. (2009) AMPK regulates energy expenditure by modulating NAD⁺ metabolism and SIRT1 activity. *Nature* 458(7241): 1056-1060.
 23. Hou X, Xu S, Maitland-Toolan KA, Sato K, Jiang B, et al. (2008) SIRT1 regulates hepatocyte lipid metabolism through activating AMP-activated protein kinase. *J Biol Chem* 283(29): 20015-20026.
 24. Yamaguchi T, Miyashita Y, Saiki A, Watanabe F, Watanabe H, et al. (2012) Formula diet is effective for the reduction and differentiation of visceral adipose tissue in Zucker fatty rats. *Journal of atherosclerosis and thrombosis* 19(2): 127-136.
 25. Lin S, Thomas TC, Storlien LH, Huang XF (2000) Development of high fat diet-induced obesity and leptin resistance in C57Bl/6J mice. *Int J Obes Relat Metab Disord* 24(5): 639-646.
 26. Mito N, Hosoda T, Kato C, Sato K (2000) Change of cytokine balance in diet-induced obese mice. *Metabolism* 49(10): 1295-1300.
 27. Lim E, Lim JY, Shin JH, Seok PR, Jung S, et al. (2015) D-Xylose suppresses adipogenesis and regulates lipid metabolism genes in high-fat diet-induced obese mice. *Nutr Res* 35(7): 626-636.
 28. Ruderman NB, Xu XJ, Nelson L, Cacicedo JM, Saha AK, et al. (2010) AMPK and SIRT1: a long-standing partnership? *Am J Physiol Endocrinol Metab* 298(4): E751-E760.
 29. Fullerton MD, Galic S, Marcinko K, Sikkema S, Pulinilkunnil T, et al. (2013) Single phosphorylation sites in Acc1 and Acc2 regulate lipid homeostasis and the insulin-sensitizing effects of metformin. *Nat Med* 19(12): 1649-1654.
 30. Yang Y, Li W, Liu Y, Sun Y, Li Y, et al. (2014) Alpha-lipoic acid improves high-fat diet-induced hepatic steatosis by modulating the transcription factors SREBP-1, FoxO1 and Nrf2 via the SIRT1/LKB1/AMPK pathway. *J Nutr Biochem* 25(11): 1207-1217.
 31. Finck BN, Kelly DP (2006) PGC-1 coactivators: inducible regulators of energy metabolism in health and disease. *J Clin Invest* 116(3): 615-622.
 32. Baron S, Bedarida T, Cottart CH, Vibert F, Vessieres E, et al. (2014) Dual effects of resveratrol on arterial

- damage induced by insulin resistance in aged mice. *J Gerontol A Biol Sci Med Sci* 69(3): 260-269.
33. Bedarida T, Baron S, Vessieres E, Vibert F, Ayer A, et al. (2014) High-protein-low-carbohydrate diet: deleterious metabolic and cardiovascular effects depend on age. *Am J Physiol Heart Circ Physiol* 307(5): H649-H657.
34. Furukawa S, Fujita T, Shimabukuro M, Iwaki M, Yamada Y, et al. (2004) Increased oxidative stress in obesity and its impact on metabolic syndrome. *J Clin Invest* 114(12): 1752-1761.

