

Total Phenolic Content of Three Samples from the Powdered Stem Bark of *Detarium Microcarpum* Guill. & Perr. (Fabaceae)

Sani A* and Hajara I

Department of Pharmacognosy and Drug Development, Ahmadu Bello University, Nigeria

Research Article

Volume 1 Issue 4

Received Date: September 11, 2017

Published Date: November 06, 2017

***Correspondent author:** Sani A, Department of Pharmacognosy and Drug Development, Ahmadu Bello University, Zaria, Nigeria, Tel: 08065619861; E-mail: sanimazab@gmail.com

Abstract

Preliminary processing of the plant material was done. The stem cuttings were debarked and the barks dried in an open air under shade. The macroscopical examinations were done. The dried plant materials were powdered. Three different samples of the plant extracts/fraction were used in the determination and the UV-Visible Spectrophotometric Analysis method was adopted. Tannic acid was used as the standard. The absorbences were measured using the Jenway 630 UV-visible spectrophotometer at 570nm against water: methanol blank. The various absorbances obtained were plotted against the corresponding concentrations to obtain a standard calibration curve.

Keywords: *Detarium. Microcarpum*, Absorbances, Calibration-curve, Phenolics, Samples, Spectrophotometer, Tannins

Abbreviations: MCE: Methanolic Plant Extract; RF: Residual Fraction; TF: Tannin Fraction; TAE: Tannic-Acid Equivalence; NILEST: Nigerian Institute of Leather And Science Technology

Introduction

Detarium. microcarpum Guill & perr. belongs to the family Fabaceae. It is commonly called Tallow tree in English. The Hausas from northern Nigeria call it *Taura*. It is a savannah tree, growing up to 9.114 m, with reddish-brown scaly bark; leaves glaucous beneath; flowers cream in dense inflorescences; fruits are edible, branchlets deciduous; it is a plant of the drier savannahs. Leaflets rounded and usually emarginated at apex, oblong-elliptic, 6-12, alternate: calyx in bud densely pubescent outside; inflorescences congested; leaflets thickly coriaceous, usually about 7-11cm broad, but sometimes smaller, with numerous translucent gland-dots; fruits sub orbicular and flattened, about 4cm in

diameter and 2.5cm thick, not very fleshy; often forming small abortive or galled fruits [1].

Phenols constitute a very large group of plant secondary metabolites. They are widespread in nature and found in most classes of natural compounds having aromatic moieties. They range from simple structures with one aromatic ring to highly complex polymeric substances such as tannins and lignins. They are important constituents of some medicinal plants and in the food industry eg in Olive oils and garlic (*Allium sativum*); they are effective antioxidants and utilized as coloring agents, flavourings, aromatizers [2-4]. Phenolic classes of pharmaceutical interest include: (1) simple phenolic compounds, (2) tannins, (3) coumarins and their glycosides, (4) anthraquinones and their glycosides, (5) naphthoquinones, (6) flavones and related flavonoid glycosides, (7) anthocyanidins and anthocyanins, (8) lignans and lignin Figure 1 [5].

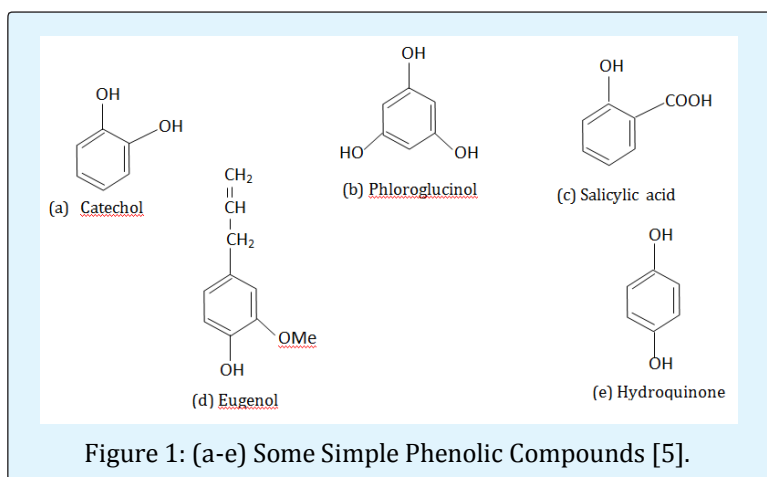


Figure 1: (a-e) Some Simple Phenolic Compounds [5].

Materials and Methods

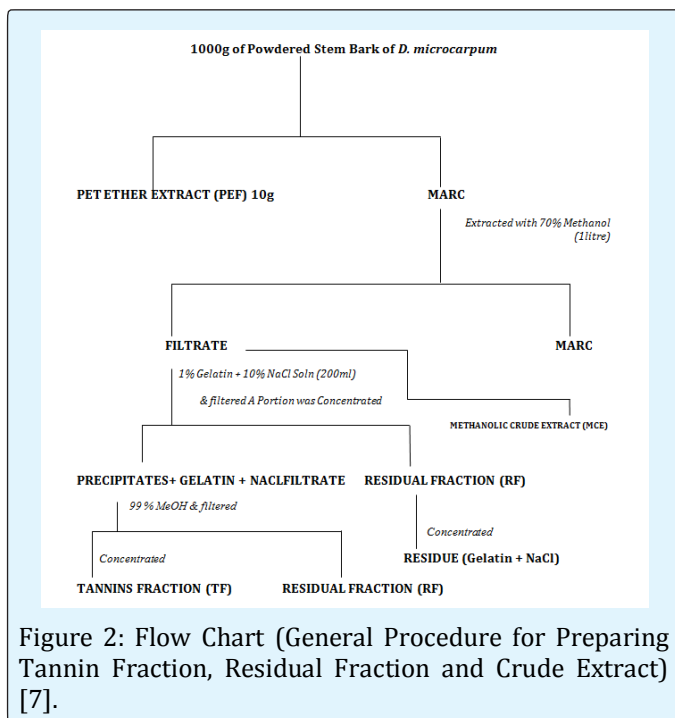
Collection and Preparation of Plant Material

The plant material was collected from the wild in vegetation around the settlements in Giwa local Government Area located in Kaduna State, Nigeria. The collection was done in December 16th, 2008. About 1Kg of the stem cuttings were collected [6]. Another fresh twig comprising all the essential parts used in the identification of plants was collected and taken to the Herbarium unit of the Department of Biological Sciences, Ahmadu Bello University, Zaria for authentication. A voucher number, 900676 was assigned to the plant sample on 17th December, 2008 by the taxonomists in charge. Preliminary processing of the plant material was done. This includes elimination of undesirable materials and contaminants, washing to remove soil, sorting and cutting. The bark was removed from the stem cuttings dried in an open air under shade. This was then powdered using mortar and pestle [5,6].

Extraction of Plant Samples

Firstly, 1000g of the powdered crude drug was defatted using 5 litre of petroleum ether (60-80°C). The marc obtained from this was subjected to extraction by cold percolation using 1 litre of 70% methanol. The filtrate obtained was divided into two portions. Tannins were precipitated from one portion using 1% solution of gelatin containing 10% NaCl. This was filtered to separate the precipitated tannins and a filtrate is obtained. The tannins were recovered from the residue by adding another 1 ltr of 99% MeOH to the precipitate obtained and filtered. This dissolves the tannins leaving a residue of gelatin and NaCl. The filtrate contains the tannins while the gelatin and the NaCl remains in the precipitates as the residue (or the marc). The filtrate was concentrated over water bath at a controlled temperature and MUST NOT be charred as some phenolics are unstable at certain high temperatures. The resulting extract constitutes the tannin fraction (TF). The filtrate obtained after precipitating the tannins was also

concentrated in an evaporating dish over a water bath. This constitutes the Residual Fraction (RF). The second portion of the filtrate obtained after defatting was concentrated to obtain the crude extract (MCE) Figure 2.



Determination of Total Phenolics

The total phenolics of the stem bark of *D. microcarpum* were determined by the UV-Visible Spectrophotometric Analysis method. Here, tannic acid was used as the standard or reference. Five different concentrations of the tannic acid (4, 8, 12, 16, and 20) g/dm³ were prepared. Each was then reacted with a few drops of 1% FeCl₃ solution in 50% Methanol at a pH of 7.12. The reaction mixture was allowed to stay at room temperature for about 8-10 minutes after which the absorbances were measured using the Jenway 630 UV-visible spectrophotometer at 570nm against water: methanol blank. The various absorbances obtained were plotted against the corresponding concentrations to

obtain a standard calibration curve. Thereafter, the plant sample was treated in the same way as the tannic acid [8].

A standard calibration curve of absorbencies against tannic acid concentrations (4-20 g/dm³) was plotted so

as to determine the corresponding concentrations of the plant samples to be used in the determination procedure Table 1.

Concentrations			ABSORBANCE (nm)
(g/50cm ³)	(g/dm ³)	Molar (M)	
0.2	4	0.0024	0.556
0.4	8	0.0047	0.603
0.6	12	0.0071	0.494
0.8	16	0.0094	0.669
1	20	0.0118	1.585

Table 1: Concentrations and Absorbances of the Stem Bark of *D. microcarpum*.

The total phenolic compounds were calculated by the following formula; T=CV/M

Where, T= total content of phenolic compounds in TAE/g

C= concentration of Extract established from the calibration curve in g/dm³

V= volume of extract in ml

M= weight of plant extract in grams

The results were expressed as mg of tannic acid equivalents (TAE)/1g of extract weight.

Results and Discussion

Yields of Plant Extract and Fractions

From the 1000g of the powdered plant sample, the extract and various fractions had the following yields: the petroleum ether fraction (8.6%), Methanolic Crude Extract (41.2%), tannin fraction (10.4%), and the residual fraction (6.5%). The residue and other substances left after the extraction and fractionation processes makes up the remaining 33.3%. This is also shown in Table 2 below.

Plant Samples	Yield of Concentrated Sample (g)	Percentage Yield (%)
Pet ether Fraction (PEF)	86	8.6
Methanolic Crude Extract (MCE)	412	41.2
Tannin Fraction (TF)	104	10.4
Residual Fraction (RF)	65	6.5
TOTAL	667	66.7

Table 2: Yields of the Extract and Fractions.

The graph below was used to determine the values of x (concentrations) from the values of y (absorbances) measured from the UV-VIS Spectrophotometer Figure 3.

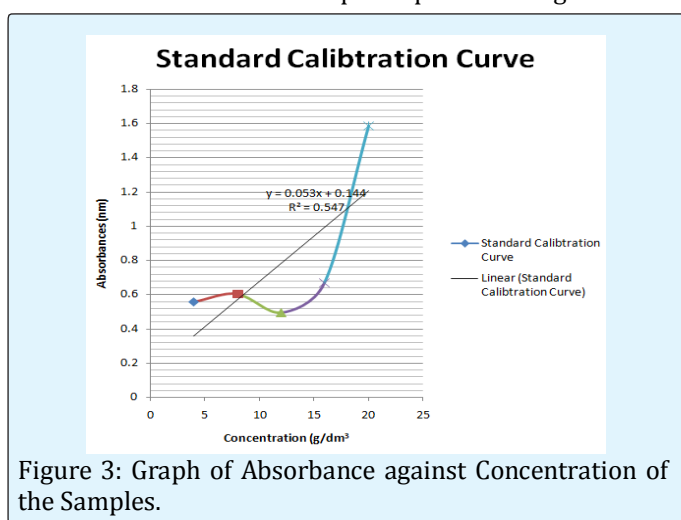


Figure 3: Graph of Absorbance against Concentration of the Samples.

The R² value being up to 0.5 is an indication that there is a strong relationship between the absorbance and the concentrations. This means that the absorbance vary with change in concentration or is dependent on the change in concentration. The crude methanolic plant extract (MCE) gave an absorbance of 1nm, tannin fraction (TF) had 0.87nm and the residual fraction (RF) had 0.44nm while the total phenolics were 16mgTAE/g, 15.86 mg TAE/g and 0.14 mg TAE/g respectively Table 3.

Extract/Fractions	The Absorbances (nm)	Total Phenolics (mgTAE/g)
Crude Plant Extract	1	16
Tannin Fraction	0.87	9.86
Residual Fraction	0.44	6.14

Table 3: Total Phenolics of the three Samples from Powdered Stem Bark of *D. microcarpum*.

Conclusion

These total phenolics as determined in terms of Tannic-Acid Equivalence (TAE) are expressed as 16 mg TAE/g of crude extract weight, 09.86 mg TAE/g of tannin fraction weight and 6.14 mg TAE/g of residual fraction weight. This shows that the crude plant extract still has the highest phenolic content although only slightly different from the ones in the tannin fraction. The residual fraction has the least content of the phenolics. This obviously constitutes other phenolics apart from the tannins since the tannins have been separated from this fraction. This also indicates that amongst the other phenolic compounds, *Detariummicrocarpum* is richest in tannins as compared to its content of other phenolic compounds

Acknowledgement

Our sincere and profound gratitude goes to Mr. Enyeribe Collins and Mr. Jerry Akawu both of Nigerian Institute of Leather and Science Technology (NILEST), Samaru, Zaria who guided immensely with the determination of the total phenolic content of the plant samples. Thank you very much.

References

- Hutchinson J, Daziel JN (1966) Flora of Tropical West Africa. 1st (Edn.), part 1 Crown Agents for Overseas Government and Administrations, Millbank, London, pp: 457.
- Aljuhaimi F, Özcan MM, Ghafoor K, Adiamo OQ, Babiker EE (2017) Phenolic compounds and sterol contents of olive (*Olea europaea* L.) oils obtained from different varieties. *Pak J Bot* 49(1): 169-172.
- Özcan MM (2016) Bioactive properties of garlic (*Allium sativum* L.) –A review. *Journal of medicinal and spice plants* 21: 174-182.
- Aljuhaimi F, Ghafoor K, Babiker E, Uslu N, Özcan MM (2016) Antioxidant potential, mineral contents and fatty acid composition of rose, blackberry and redberry fruits. *Z Arznei-Gewurzpfla* 21: 188-192.
- Evans WC (2008) Trease and Evans pharmacognosy. 15th Edition. Rajkamal Electric press, Delhi, India pp: 516-536.
- Birdi TJ, Brijesh S, Daswani PG (2008) Approaches Towards the Preclinical Testing and Standardization of Medicinal Plants. Foundation for Medical research, India, pp: 1-17.
- Canell Richard JP (1998) Natural Products Isolation. Glaxo Wellcome Research and Development, Stevenage, Herts, UK. Humana Press Totowa, New Jersey, pp: 349-352.
- Singleton VL, Orthofer R, Lamuela-Raventos RM (1999) Analysis of total phenols and other oxidation substrates and antioxidants by means of Folin-Ciocalteu Reagent. *Methods Enzymol* 299: 152-178.