



Modelling of Index System of Economic Vitality During the COVID-19 Epidemic

Jinming Cao¹ and Bin Zhao^{2*}

¹School of Information and Mathematics, Yangtze University, Hubei, China

²School of Science, Hubei University of Technology, Hubei, China

*Corresponding author: Dr. Bin Zhao, School of Science, Hubei University of Technology, Wuhan, Hubei, China, Tel/Fax: +86 130 2851 7572; Email: zhaobin835@nwsuaf.edu.cn

Research Article

Volume 5 Issue1

Received Date: January 25, 2021

Published Date: March 16, 2021

DOI: 10.23880/jidtm-16000147

Abstract

Economic vitality is an important indicator of economic development. In this paper, we have created a panel data model to analyze the influencing factors of economic vitality in China. We conducted the following studies.

Using the correlation analysis, the correlation among various elements is revealed to be strong, which denies the independence null hypothesis. By establishing VAR-VEC model, the long-term and short-term effects of economic policies on economic vitality in Beijing are analyzed. It is showing that the population changes and enterprise vitality have a positive impact on economic vitality with the influencing factors being 0.01 and 0.07 respectively. At least three cointegration relationships between time series exist using the ADF unit root test and Johansen cointegration test. We use Ais-Sc Criterion to determine the order of delay as the third order and OLS estimation method to get the coefficients of VEC Model. Due to the effect of experience accumulation, the economic vitality follows a W-shaped trend. Utilizing the minimum average deviation method to preprocess the index data, 9 representative indexes are obtained. We then extract two main factors by factor analysis and build an index system of economic vitality. The economic vitality of each city from 2009 to 2020 is calculated based on this index system. Beijing, Shanghai, Guangzhou and Shenzhen often rank first, while Kunming and Dongguan often rank last. The panel data model test results are similar to that of index system on the same data.

Finally, the previous conclusions have been reviewed. The ORT development strategy to improve economic vitality is advised.

Keywords: Panel Data Model; VAR-VEC Model; Factor Analysis; Index System

Introduction

Under the background of the new age, China's economic, social, cultural, ecological, political and other fields are coruscating new vigor and vitality. At the same time the good life is people's increasing need to inadequate and unbalanced of the contradiction between the development of becoming the social contradiction, and the unbalanced economic growth between different regions is the concentrated reflection of unbalanced is not fully developed; To accelerate the narrowing of the gap in local economic growth, promote the vigor of regional economic growth, and promote the

coordinated growth of a regional economy is the basis and key to solving the main social contradictions in the new age, and is also the driving force of economic and social development axis [1].

Regional economic vigor is a part of comprehensive local competitiveness. In recent years, to improve economic vitality, some regions have introduced a lot of preferential policies to stimulate economic power, such as reducing the approval steps for investment, providing financial support for entrepreneurship, and lowering the threshold for settling down to attract talents [2]. However, due to distinct resource

endowments, these policies have distinct affects in distinct regions. How to grasp the key factors and effectively improve it is a worthy research topic [3].

In order to study how to improve the regional economic vitality, this paper takes some cities in China as an example, selects several indicators to measure it, constructs the index system, and studies the relationship model of the influencing factors of it, and considers the influence of population change trend and enterprise vitality change on the regional economic vigor change. At the same time, it analyzes the short-term and long-term impact of economic policy transformation on the economic vitality of various regions [4].

At present, scholars at home and abroad rarely make more research on economic vitality, so this paper hopes to establish a mathematical model to analyze and measure regional economic vitality [5], and sort the economic vitality of some cities, so as to better extend the economic vitality analysis model to more research fields [6].

Models

Panel Data Model

Based on the panel data model, it collects data from various provinces and cities, performs correlation test and principal component analysis on the data [7]. The fixed effect test and random effect test was carried out for the obtained factors [8]. And the influence of policy and enterprise vitality on economic vigor was dissected based on the established relationship the model between each element and economic vigor [9].

Data Analysis and Processing: Based on the collected data has error and deficiencies, to reduce the invalid, the influence of the error data of the following model, improve the reliability of data, need to collect the data pretreatment, firstly the filtered data, remove abnormal data, secondly, proper supplement of incomplete data, finally, has correlation data linear regression analysis forecasting and slight fluctuation data using the moving average method to fill the missing value, to further improve the accuracy and the

integrity of the data [10].

1) Data Selection Principle: This paper needs to collect alien indicator data describing economic vitality and influencing economic vigor; and the following classical indicators can be obtained according to the expert method and the literature [11-14].

Dependent variable: In the existing economic vitality research and analysis, more choose gross domestic product (GDP) as a measure of it. In this paper, in order to measure regional economic power, main elements from the effects of the economic vigor that reflects the GDP growth rate as the level of economic development during the period of change degree of dynamic indexes, namely whether a national economic basic index of the moving, and USES the linear regression analysis and panel data model analysis, the main measures for regional economic vitality.

Independent variables: Based on the existing literature research outcomes and the above analysis, this paper selects nine aspects. It includes population growth rate, fiscal expenditure, and employment rate (mainly used to reflect the main influencing factors of local economic vitality and its growth trend).

The employment rate is expressed by the number of unemployed; At the same time, in the establishment of the model, for the negative value of population growth rate, to reduce the error in the large number region. Dummy variables can be used instead of the original statistical samples, which are reset to zero in this paper.

Control variables: Based on the analysis of the comprehensive evaluation index system of urban economy. Considering the availability of data, this paper introduces independent innovation ability, per capita length of education, professional and technical talent inflow and other irrelevant variables as control variables. Through analysis, the variables other than independent variables that can affect the change of dependent variables should be well controlled and regarded as constants to obtain appropriate causal relationship and attain the accurate value [15-19].

Variable Name	Definition
Dependent variable	The local GDP, Added value of tertiary industry, Education funds, LGE, Government expenditure, Gross income from international tourism, Consumer price index, Population, Unemployment, Number of patents filed.
Independent variables	Population growth rate, Fiscal spending.
Control variables	Independent innovation ability total corporate profitsy, Per capita years of education, The inflow of professional and technical personnel.

Table1: Variable definition.

2) Independence Test: In the analysis of the relationship between the factors affecting economic vitality, to fully understand whether there is an internal relationship between the elements. According to the processed data, this paper carries out an independence test for each element.

The data source is the national bureau of statistics, and the independence test is executed on the pre-processed data. See the appendix for the specific data. Make the following assumptions about the research hypothesis:

Null Hypothesis: The factors that influence positive energy are independent of each other.

Alternative Hypothesis: The factors influencing economic vitality are not independent.

Firstly, a chi-square independence test was executed. SPSS was used to conduct independent test for each influencing element to observe whether there was any correlation between each factor. The test results are as follows:

	Observations					
	Effective		Missing			
	N	Percentage	N	Percentage	N	Percentage
Local	309309	100.0%	0	0.0%	309309	100.0%
Travel	309309	100.0%	0	0.0%	309309	100.0%
Index	309309	100.0%	0	0.0%	309309	100.0%
Profit	309309	100.0%	0	0.0%	309309	100.0%
Population	309309	100.0%	0	0.0%	309309	100.0%
Work loser	309309	100.0%	0	0.0%	309309	100.0%
Third	309309	100.0%	0	0.0%	309309	100.0%
Patent	309309	100.0%	0	0.0%	309309	100.0%
GDP	309309	100.0%	0	0.0%	309309	100.0%

Table 2: Independence test results.

It can be seen from Table 2 that the cross relation between each factor and the year. The cross table shows the availability of different influencing elements which occupies a complete percentage. It indicates that the opted data are valid values with high accuracy, which can be further

compared in pairs to test the independence of judgment elements. The significance analysis is used to determine whether there is independence between factors. The chi-square significance test results are shown in Table 3.

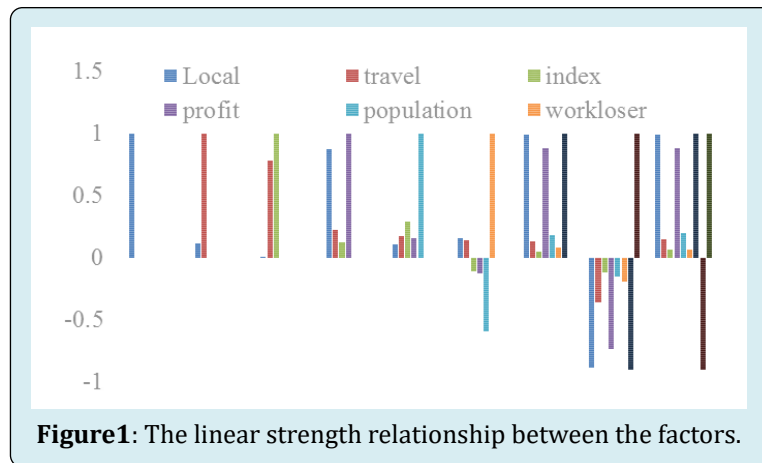
	Numerical	Df	Asymptotic significance (2 ends)
Person square test	2753847.871 ^a	2745	.000
Likelihood ratio	1416065.090	2745	.000
Linear to linear	13402.742	1	.000
The number of Valid observations	309309		.000

Table 3: Chi-square significance test results.

It can be seen from Table 3 that the degree of freedom is the probability of Person chi-square, which is less than 0.05. And the null hypothesis is rejected. The influencing factors are not independent of each other.

3) Correlation Analysis: Each factor in the collection is the

indicator data of each city in the country, which belongs to the panel data. There may be a correlation between the data. Considering the correlation among various elements, the linear strength relationship diagram of each element is attained based on the data as follows



As can be seen from the observation in figure 1, there is a correlation among all factors, and the expression form and strength of the relationship among all elements. The closer the data is to 1, the stronger the correlation is.

Local GDP is positively correlated with Government expenditure Gross income from international tourism

Consumer price index Education funds Total corporate profits Population Unemployment and added value of the tertiary industry, and negatively correlated with the number of patent applications. SPSS was used to conduct a correlation analysis on the data and the outcomes were shown in Table 4.

	Average	Standard deviation	95% confidence interval (lower bound upper bound)	Significant
Local	4047.2789	2473.46062	(3788.2312,4321.1274)	0.047
travel	2071.1539	3068.79243	(1732.0034,2455.2115)	0.00
index	102.306	1.5306	(102.134,102.473)	0.006
profit	2024.9450	2138.79648	(1793.7463,2264.6996)	0.011
population	5.42268	2.847803	(5.12150,5.74611)	0.017
Work loser	24.8066	14.06292	(23.3868,26.4238)	0.00
third	9627.7616	8985.16139	(8672.1902,10640.3587)	0.007

Table 4: Correlation analysis.

Correlation coefficients can quantitatively describe the closeness of linear relationships among elements. And SPSS is used for correlation analysis to attain the correlation

coefficients among the influencing factors, as shown in Table 5.

	Local	travel	index	profit	Pop	Work	third	Patent
Local	1	0.602	-0.113	0.777	-0.155	0.570	0.921	0.911
travel	0.602	1	-0.022	0.592	-0.034	0.217	0.709	0.656
index	-0.113	-0.02	1	0.011	0.034	-0.057	-0.092	-0.073
profit	0.777	0.592	0.011	1	-0.145	0.589	0.875	0.935
pop	-0.155	-0.034	0.034	-0.145	1	-0.478	-0.153	-0.160
Work	0.570	0.217	-0.057	0.589	-0.478	1	0.515	0.625
third	0.921	0.709	-0.092	0.875	-0.153	0.515	1	0.972
GDP	0.911	0.656	-0.073	0.935	-0.160	0.625	0.972	1
patent	0.399	0.656	-0.034	0.662	-0.108	0.390	0.566	0.608

Table 5: Correlation coefficient result.

According to the above correlation analysis Table 5, there is a correlation among all factors. And the positive correlation coefficient is distributed between 0.5 and 1 reflecting a strong correlation. According to the significance test of the correlation coefficient, the significance values are all less than 0.05. It indicates that the correlation coefficient has reached a high level of significance. Therefore, there is a strong correlation between various elements are influencing economic vitality.

	Multiple linear regression	Panel data model
Independent variable Selection	Independent variables must be mutually exclusive	No special requirements
Observations	Less description	More description
Analysis of the dimension	One-dimensional	Two-dimensional
Predictive accuracy	Accurately	Relatively accurate
Information contained	Less	More
Controllability	No	Yes

Table 6: Model comparison.

Based on the data and problem in this question, the panel data model is a better choice. The panel data model includes both the cross-section and the time dimension. Here, the elements affecting economic vigor are taken as the cross-section. And the year is taken as the time dimension. Where, i ($i=1\dots8$) represents the following linear model set for the year:

$$y_{it} = \alpha_i + \lambda_t + \beta x_{it} + \varepsilon_{it}.$$

The panel data model can be further divided into fixed effect model and random effect model.

1) Fixed-effect model: The individual affect is regarded as a stable factor that does not change with time, then equation one can be expressed as a vector

$$y_{it} = \alpha_i A_T + \lambda_t + \beta x_{it} + \varepsilon_{it}.$$

In the formula; A_T is a column direction where all elements are 1, and the others have the same meaning as the original model.

2) Random effect model: The individual affect α_i is regarded as a random factor that changes with time. By using the random effect model, the long-term elements and short-term elements in the variance can be separated. The setting of the model is as follows:

$$y_{it} = \alpha_{it} + \lambda_t + \beta x_{it} + \varepsilon_{it}.$$

Establishment of Model: This section is based on the panel data of various factors collected from 31 provinces and cities in China from 2009 to 2020. Considering the influence of multiple factors on economic vitality, various methods can be used, such as multiple linear regression and panel data model. Here, a rough comparison is made before further model establishment. Compare the panel data model with the multiple linear regression model, as shown in Table 6.

3) Model Determination Based on Hausman Test:

Because the missing related variables are not excluded, there will be dependent. Variable-local GDP will change with the same period correlation of random interference items. And the constraint conditions of exogenous variables are not satisfied so that the OLS estimator is biased and different. OLS is used to test the fixed-effect model. And GLS is used to test the random effect model. According to the reference [13], the difference between the random effect model and the fixed effect model is that it is difficult to try to make a high degree of distinction on the description of individuals. The stable affect will cost more degrees of freedom, while the random affect is more universal. The proposed the Hausman test can be used to distinguish them to some extent.

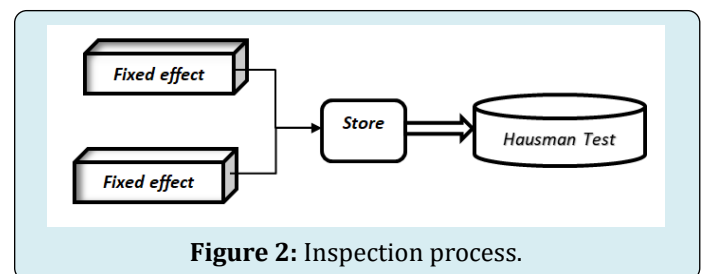


Figure 2: Inspection process.

Advanced random effect model test, test results are stored; Then the stable effect test is carried out on the model and the outcomes are saved at the same time. Finally, the Hausman test is performed on the outcome to obtain the final model. The method to verify that both models are satisfied is established in turn.

It can be seen from the output that the parameter estimation variance of random and fixed-effect models under this test is a positive definite matrix, which satisfies the test conditions. Under the 95% confidence interval, the P -value is much less than 0.05. Therefore, the fixed-effect model should be opted as the explanation model for the influence of economic vitality, while the random effect model should be opted instead.

Model Solving Process: In this section, stability analysis is conducted on the existing panel data, fixed-effect test and random effect test are executed on the whole data based on the panel mathematical model, and Hausman test is used to define the applicable model for the panel data. Finally, the

analysis outcomes are attained based on the panel regression model.

1) Data Stability and Reliability Analysis: The data of this paper comes from China National Statistical Yearbook, which includes the local government's financial expenditure, the total income of local international tourism, consumer price index, total profits of enterprises, population, unemployment, tertiary industry, total patents, and local GDP. The inconsistency of the order of magnitude of each part will cause trouble to the model fitting. According to the statistical yearbook, the city is divided into 1-31. The distribution of various data is shown in Figure 3.

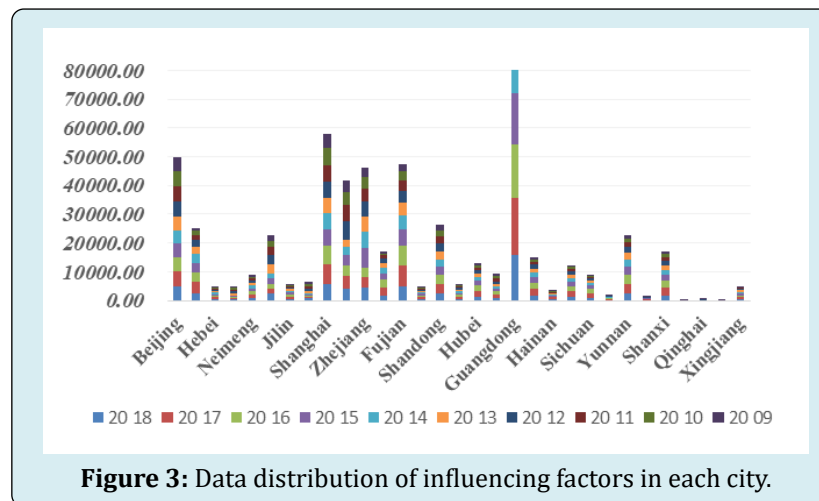


Figure 3: Data distribution of influencing factors in each city.

Take Figure 3 for example, standardize it first. Assume that the original data is x_m , after standardization is X_m , and

$$X_{ni} = \frac{x_{ni}}{\text{MAX}(Y) - \text{MIN}(Y)}.$$

After attaining standardized data, it is shown as follows

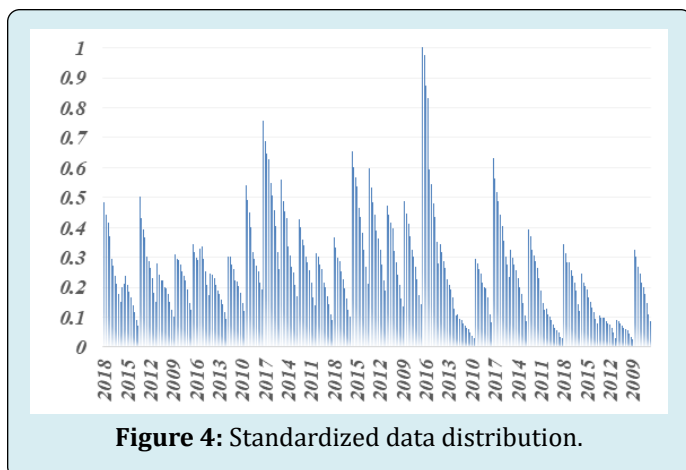


Figure 4: Standardized data distribution.

It can be seen from the observation Figure 4 that after the standardization, the feature expression is clearer, which is conducive to the next model inspection work.

2) Fixed Effect Test Based on OLS: Panel data has the characteristics of separating long-term variables and short-term variables, while the fixed-effect model focuses on the relationship between variables within the group. It is necessary to test the fixed effect model. The estimation method is OLS estimation. Two assumptions of the fixed-effect model are made.

Hypothesis 1:

$$E[\xi_i | x_i, a_i] = 0.$$

Hypothesis 2:

$$\text{Var}[\xi_i | x_i, a_i] = \sigma^2 I_T$$

The ξ in Hypothesis one is the independent variable interference term.

Hypothesis 1: Assume that the ξ does not affect the observed value, unobserved value, and post observed value.

Hypothesis 2: The general test of homogeneity. Ensure that the model satisfies the blue estimate of OLS. And organize

data into long data types.

The year (2009-2020) is the cross-section marker, the province (1-31) is the research individual. And each type of

independent variable is the influencing factor.

The solution is based on Stata software, and the outcomes are shown in Table 7.

Variables	GDP	$P> t $ [95% Conf. Interval]
Local	0.07766356	0.000
travel	0.04812193	0.007
index	0.01040376	0.116
profit	0.10857042	0.001
population	0.00840291	0.011
work loser	0.02157164	0.083
third	0.72645815	0.000
sigma_u	0.03622232	F = 0
rho	0.91812864	F(30,272)=29.86
sigma_e	0.01081659	Prob > F = 0.0000

Table 7: Fixed effect test model.

Among them, the F value is very close to 0, indicating that the fixed effect is very significant in this case. Among the seven independent variables, the consumer index and unemployment rate are not significant within the 95% confidence interval.

Local government expenditure, total tourism income, total profits of enterprises, resident population, and tertiary industry income have statistical significance. The statistics are shown in Table 8.

Variables	GDP
Local	0.0776635
travel	0.0481219
profit	0.108570420
population	0.0084029
third	0.7264581

Table 8: Indicators passing the fixed effect test.

Among them, the third industry has the most significant impact on GDP, and the consumer the index has the least influences on GDP.

We can know that all the opted indicators have positive significance for GDP growth within the statistical range. It shows that this test has adopted hypothesis one and hypothesis two for panel data. And both of them are true.

3) Random Effect Model Test Based on GLS Estimation:

The number of indexes (N) is 10, and the period (T) is ten years. In this case, it is also possible to meet the random

effect model; the further test of the random effect model is needed.

$$\text{Hypothesis 1: } E[\xi_i | x_i, a_i] = 0,$$

$$\text{Hypothesis 2: } \text{Var}[\xi_i | x_i, a_i] = \sigma^2 I_T,$$

$$\text{Hypothesis 3: } a_i \sim \text{IID}(0, \sigma_a^2),$$

$$\text{Hypothesis 4: } \text{Cov}(a_i, x_{it}) = 0,$$

$$\text{Hypothesis 5: } u_i | x_i \sim \text{IID}(0, \sigma^2 1_T + \sigma_a^2 A_T A_T').$$

According to the above assumption, suppose that the distribution of each independent variable is constrained in a specific case. And the effect of each independent variable obeys the mean value of 0. The second is the description of random interference, which is not correlated with explanatory variables. The third term makes the two coefficients independent of each other.

Based on the above description, the GLS estimation method can be used to obtain whether the panel data model conforms to the random effect test when the collected variables are close to the period.

Organize data into long data types. The year (2009-2020) was used as the cross-section marker, the province (1-31) as the study individual, and each type of independent variable as the influencing factor. Use Stata software to solve the problem and get the outcomes, as shown in Table 9.

Variables	GDP	$P > t $ [95% Conf. Interval]
Local	0.07772621	0.000
travel	0.03259963	0.051
index	0.00628094	0.123
profit	0.14530897	0.000
population	0.00921631	0.332
workloser	0.06423435	0.000
third	0.71987214	0.000
sigma_u	0.03622232	F = 0.
rho	0.91812864	F(30,272)=29.86
sigma_e	0.01081659	Prob > F = 0.0000

Table 9: Test results of random effect mode.

In 95% confidence interval, P value is 0, that is to say, five hypotheses are passed in this case. This case is suitable for the random effect model.

Variables	GDP
Local	0.07766353
population	0.00840295
profit	0.14530897
workloser	0.06423435
third	0.71987214

Table10: Indicators passing the random effect test.

The third industry has the most significant impact on GDP, and the resident population has the least influence on GDP. We can know that all the selected indicators have positive significance for GDP growth within the statistical range. At the same time, it shows that the test has passed all the hypotheses of panel data and satisfies the random effect.

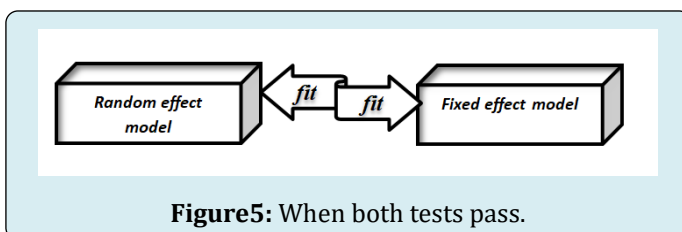


Figure5: When both tests pass.

The number of indexes (N) selected in this paper is 10, and the time span (T) is 10 years. In this case, both the fixed

effect model and the random effect model are satisfied, and the further model test is needed. At this time, the Hausman test should be taken.

4) Model Determination Based on Hausman Test: According to the reference [13], the difference between the random effect model and the fixed effect model is that it is very difficult to distinguish them to a high degree in the description of individuals. The stable effect will consume a large degree of freedom. At meanwhile, the random affect is more universal on this basis. The proposed Hausman test can be used to distinguish them to some extent.

The test of the advanced random effect model will store the test results, then test the fixed effect of the model and save the outcome. The Hausman test is used to get the final model. Then the method to test the two models simultaneously is built.

Variables	Value
Chi2(7)	382.02
Prob	0.0000

Table 11: Hausman test results.

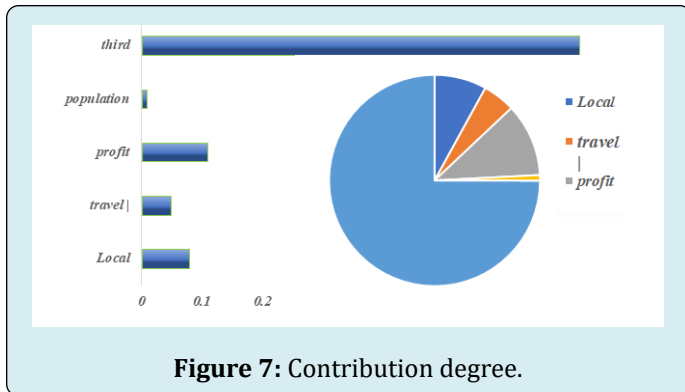
It is known from the output that the variance of parameter estimation of random and fixed effect models under this test is a positive definite matrix, which satisfies the test conditions. Under 95% confidence interval, P -value is far less than 0.05. Therefore, we should choose the fixed-effect model as the explanation model of economic vitality.

5) Analysis of Model Test Results: Using the Hausman test, the fixed-effect model is determined as the interpretation model of economic vigor, and the outcomes are shown in Table 12.

Variables	GDP
Local	0.0776635
Travel	0.0481219
Profit	0.108570420
Population	0.0084029
Third	0.7264581

Table 12: Test results of the fixed-effect model.

Among them, the factors that have a positive influence on economic vitality (GDP) are the local government financial expenditure, the total annual revenue of local tourism, the total annual profit of local enterprises, the local permanent population, and the GDP of the tertiary industry.



According to figure 7, based on the fixed-effect model, it can be concluded that the tertiary industry has the largest influence on the estimated vitality. It followed by the annual income of enterprises (enterprise vigor), the input expenditure of local government (policy bias), the total income of local tourism, and finally the permanent population. Among them, the influence of the tertiary industry on economic vigor is more than seven times that of enterprises. It indicates that the third vigor can occupy most of the effect among the factors influencing it.

6) Activation Scheme Proposed Based on the Fixed-Effect Model: According to the fixed-effect model shown in figure 4, the explanation degree of each factor to economic vitality has been given. And the following Suggestions are given according to the influence degree.

1. To increase the proportion of the tertiary industry in the overall economy, the tertiary industry plays an important role in the influencing factors. So it is necessary to strengthen the overall proportion of the tertiary industry in the current stage of social construction. Raising the economic proportion of the tertiary industry will promote the improvement of economic vitality.
2. In the process of development, the region should combine its resource endowment and industrial foundation to find the optimal ratio of enterprise structure. And it will complete the adjustment of enterprise structure as soon as possible and develop appropriate leading industries to promote economic growth. It will be conducive to a steady increase in economic vitality.
3. Local government expenditure has a impact on economic vitality. The government needs to be tightly managed to make its spending transparent. We will increase government support for enterprises.
4. Entrepreneurship is encouraged. The government takes the lead in encouraging entrepreneurship and social practices are carried out to transform enterprises.

According to the influence of individual factors on economic vitality attained from the fixed model, the influence law of elements is summarized, among which policy adjustment (government expenditure) and enterprise vigor (total annual profit of enterprises) have a positive influence on economic power, and the implementation of policies in this respect should also be intensified.

7) The influence of changing trends of population and enterprise vigor on economic vitality:

Seven variables were opted, GDP was taken as the expression of economic vitality, and the fixed-effect model in the panel data model was used to draw the following conclusions:

The growth rate of the permanent resident population has a positive impact on economic vitality. The increase of permanent resident population will increase economic vigor in a small extent.

If the population grows too fast, it will increase the rate of job competition and lead to the rise of unemployment, which will hurt economic vitality. However, the growth decline of enterprise vigor directly affects economic power and presents a positive correlation change.

The establishment of the VAR-VCE dynamic volatility model

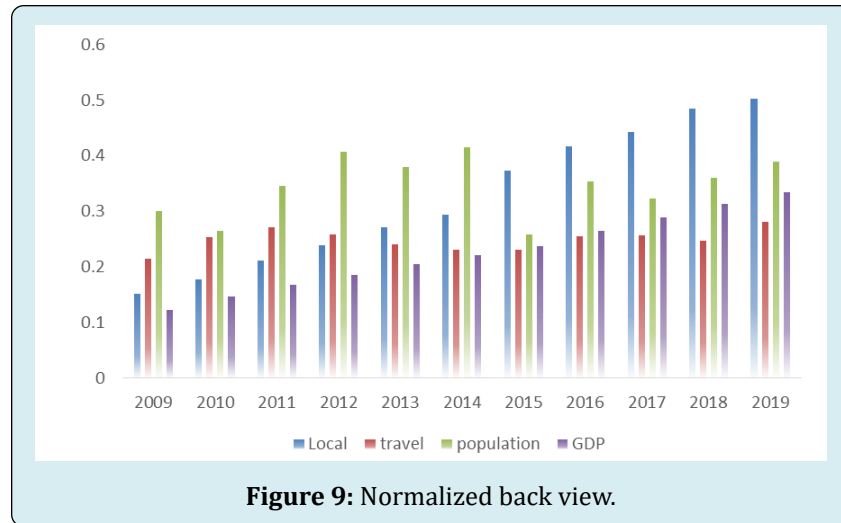
Based on the panel data, this section intercepts the local government expenditure of Beijing as a representation of economic policy and establishes a vector autoregressive model (VAR).

Taking economic vitality as the research object, the stability of each factor is verified. Based on vector error correction model (VEC), the lag order and influence function response chart are given to describe the long-term and short-term influence of policy implementation on it.

Data preparation

Based on the cross-section data of Beijing in the panel data of the whole country, this section conducts relevant test and Analysis on the data. Finally obtains five significant factors that have an influence on the economic vitality: local per capita GDP, local government expenditure, local tourism gross income, local people's living consumption index, and local resident population.

Among them, five kinds of data of Beijing, local per capita GDP, local government expenditure, local tourism gross income, local people's living consumption index, and local resident population is given in Figure 9 after standardization.



It can be seen from Figure 9 that the local government expenditure has an increase in each year, basically showing a linear growth. There is no significant change in the local tourism income, which is relatively stable compared with other indicators. It indicates that Beijing, as the capital of the country, is very successful in the construction of tourism culture. The resident population gradually declined after reaching the peak from 2012 to 2013, which indicates that Beijing's population has changed largely, and its GDP has grown steadily.

It is not obvious that GDP is affected by the fluctuation of alien factors. To understand the dynamic influence of various elements on GDP, we need to carry out vector auto regression for this group of data.

The establishment of vector auto regression (VAR) model

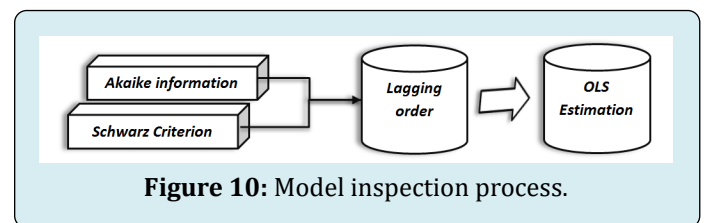
Based on the statistical properties, a function containing the lag value of exogenous and endogenous variables are established to construct the model, which illustrates the influence of the dynamic changes of variables on the dependent variables.

VAR model is essentially a model of multi equation class. Based on the moving changes of multiple variables, the interaction between alien variables is investigated. Any endogenous variable in the equation system is constructed to express the lag term of any variable. Its general expression is

$$Y_t = A_1 Y_{t-1} + A_2 Y_{t-2} + \dots + A_p Y_{t-p} + B_0 X_t + \dots + B_r X_{t-r} + \dots + B_s X_{t-s} + \varepsilon_t.$$

Where Y_t is the endogenous variable vector of K dimension, Y_{t-i} ($i=1,2,\dots,p$) is the vector of endogenous lag variable, X_{t-i} is the d -dimensional exogenous variable vector or lags

exogenous vector. P and R are the lag orders of endogenous and exogenous variables, respectively. A_i is a k -order coefficient; B_i is a k -row- d -column coefficient matrix, these matrices need to be estimated by specific methods. The last term is a vector composed of k -dimension random error terms. According to the solution of the following figure, we can get the estimation coefficient.



Firstly, the lag order of the AVR model is determined according to the AIC information criterion and SC criterion when the minimum value is taken. Then the lag order is substituted into the meta model, and the coefficient of the AVR model can be obtained by the OLS estimation.

The Establishment of the VEC

When multiple time series are unstable, the Johansen method is used to test whether there is a cointegration relationship. If there is co integration relationship, the VEC model can be established to analyze the dynamic relationship of its multi pass model.

$$\Delta Y_t = \alpha ECM_{t-1} + \sum_{i=1}^{p-1} \Gamma_i \Delta Y_{t-1} + \varepsilon_t$$

In the formula, ECM_{t-1} is the error correction term. Compared with the AVR model. The error correction term is an important feature to distinguish the two.

The error correction term reflects the long-term equilibrium relationship of each variable, and the deviation of long-term equilibrium can be corrected by quick short-term adjustment. Before building the VEC model, the Johansen test is needed to define the stability and reliability of the model.

Model summary

To determine the regression type of a group of vectors, we need to conduct multiple tests. Finally we can define whether the model has a correction term. Next, we summarize the model to construct a complete the VAR-VEC model.

Solution of the model

In this section, we first judge the stability of time series and then do the ADF test on vector series to decide its stability.

Then, the first-order and second-order's difference is used to judge its stability. The cointegration test of the original data is carried out. And the satisfied model type is attained.

Finally, the stability of the model is judged. And the moving influence of policy implementation on economic vitality is obtained.

1) The ADF unit root test of vector sequence

First, all the time data are tested by the ADF test, and the distinct order is 0. The lag order is 1-2, and the test results are shown in Table 13.

	T-Statistic	P	State
lnGDP	-1.679	0.088	Uneven
lnLocal	-2.507	0.012	Uneven
Intravel	0.107	0.745	Uneven
lnindex	-0.058	0.6614	Uneven
Inpopulation	-0.858	0.342	Uneven
Inworkloser	-0.402	0.537	Uneven

Table 13: zero-order difference ADF unit root test results.

It can be seen from Table 13 that under the time test of order 0 raw data, the t-values of six kinds of t-tests are greater than the comparison data under the confidence interval of 95%, shows that the time series of this group of data does not pass the ADF test of the original data, and the further differential test is needed. Carry out difference differentiation on the original data, and continue the ADF test on the data after difference. And the outcomes are shown in Table 14.

	T-Statistic	P	State
lnGDP	-1.911	0.325	Uneven
lnLocal	-2.911	0.049	Uneven
Intravel	-1.871	0.345	Uneven
lnindex	-1.785	0.359	Uneven
Inpopulation	-4.444	0.004	Even
Inworkloser	-1.608	0.475	Uneven

Table 14: ADF test results after first-order difference.

It can be seen from Table 14 that under the ADF time series test, the T value of *population* t test in six species is less than the comparison data under the confidence interval of 95%.

Among the six kinds of data, only the population has passed the first-order difference test. The first-order difference of this group of data is not zero. So a further difference test is needed.

Carry out the second-order difference differentiation on original data, and continue the ADF test on the data after the difference and the outcomes are shown in Table 15.

	T-Statistic	P	State
lnGDP	-11.634	0.000	Even
lnLocal	-9.1682	0.000	Even
Intravel	-11.720	0.000	Even
lnindex	-11.937	0.000	Even
Inpopulation	-5.342	0.000	Even
Inworkloser	-11.918	0.000	Even

Table 15: The ADF test results after second-order difference.

It can be seen from Table 15 that all the data after the second-order difference have passed the ADF test, that is to say, this group of data is zero in the second-order; and then the inter group cointegration test is carried out.

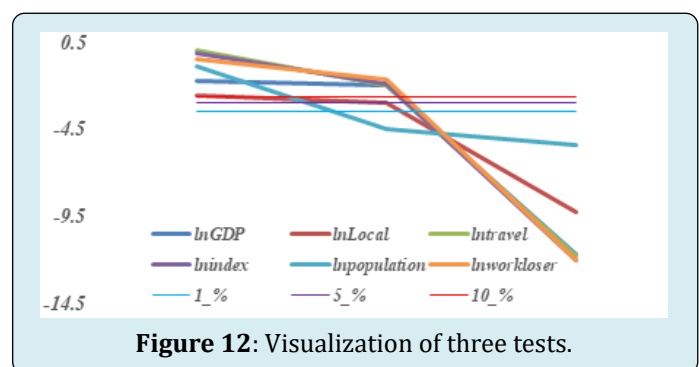


Figure 12: Visualization of three tests.

Figure 12 shows the visual information of three points of each variable under three tests. The confidence intervals of the middle three levels are 1%, 5%, and 10% respectively. After the first-order difference, the only *population* passed the test. After the second-order difference, all the data pass the test. And the group of data is the second-order zero integer data.

2) Johansen co integration test of variables

According to the ADF test, the original variable is a second-order zero integer sequence; that is to say, the original variable is an unstable sequence. First, the Johansen co integration test is carried out to find out whether there is a co integration relationship between its combinations.

The test method is to calculate the trace statistics trace and the maximum eigenvalue Max eigevalue. Using the cyclic statistical hypothesis, the existence of a cointegration logarithm is assumed. Table 16 shows the Johansen co integration test results.

Hypothesized No. of CE(s)	Trace Statistic	0.05 Critical Value	Prob.**
None *	255.6213	95.75366	0.0000
At most 1 *	161.7542	69.81889	0.0000
At most 2 *	100.2905	47.85613	0.0000
At most 3 *	41.58610	29.79707	0.0014
At most 4	7.115546	15.49471	0.5642
At most 5	0.998791	3.841466	0.3176

Table 16: Cointegration test results.

From the trace statistics trace in Table 16, it is assumed that none is the sequence without cointegration.

Under this assumption, the trajectory value is 255.6213, which is greater than the critical value of 95.7537. If the original hypothesis is rejected, there is at least one cointegration relationship.

In the case of 5% confidence level, the original assumption is that there are at least four sets of cointegration relationship. Its trajectory value is less than the critical value. And the determination of the fourth set of cointegration relationship is rejected by the assumption.

There are at least three cointegration relations in the linear combination of time series with surface instability.

Establishment and solution of VEC Model

When the original data series are non-stationary time series and Johansen cointegration test shows that there are at least three cointegration relationships in the series. To build a proper VEC model, it is necessary to determine the

optimal lag order of the model. The stability of the model is explained by the AR root graph and Roland causality analysis.

Finally, the impulse response chart is given, and the long-term and short-term effects of policy implementation on economic vitality is dissected.

1) Determination of lag period based on AIS-SC minimization criterion

When the model is not integrated and stable, multiple VAR models with different lag periods can be established first.

According to the relationship of multiple research variables, the values of each AIC and SC can be recorded and compared.

The optimal lag period of the model can be selected according to the theory of reaching the minimum simultaneously. The outcomes in Table 17 are calculated by Eviews software.

D	AIC	SC
VAR(0)	-21.2662	-21.1206
VAR(1)	-46.448	-45.4286
VAR(2)	-48.0552	-46.16191
VAR(3)	-48.7483	-45.98121
VAR(4)	-48.81	-44.16917
VAR(5)	-48.9	-41.38534
VAR(6)	-49.09	-38.70157
VAR(7)	-49.1406	-35.87832
VAR(8)	-49.2197	-31.0836

Table 17: AIS-SC calculation results.

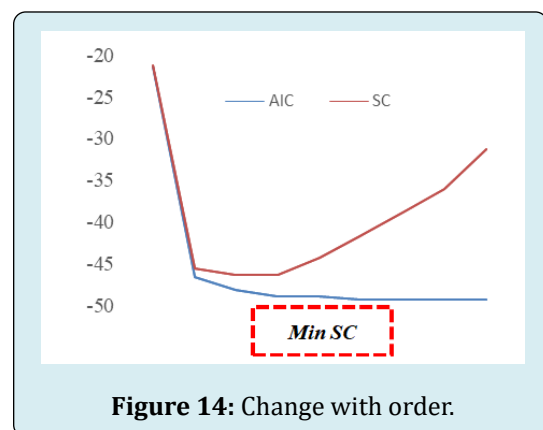


Figure 14: Change with order.

It can be seen from Table 17 that the AIS value decreases with the increase of VAR (N) lag period, presenting a monotonic decreasing state. The SC has a minimum at VAR (3). According to the AIS information standard and SC

standard, the optimal lag time is opted as the third-order lag time.

2) Determination of VEC model parameters

According to the above analysis, through the cointegration test, there are at least three groups of cointegration relationships between time series. It can be

	lngdp	lnlocal	lntravel	lnindex	lnpop	Lnworklose
C	1	-0.7287	-0.76511	1.809693	-0.23384	0.892205
V	0	-0.00682	-0.08337	-0.34303	-0.02693	-0.1565

Table 18: Results of OLS estimation of VEC Model.

Table 18 shows the cointegration formula with the maximum log-likelihood.

Thus, the final cointegration equation can be written as

$$\ln gdp = 0.73 \ln travel + 0.77 \ln travel - 1.08 \ln index + 0.23 \ln pop - 0.89 \ln worklose - 4.21937.$$

Through the cointegration relationship, we can see that the long-term equilibrium relationship between economic vitality and local government expenditure, local tourism revenue and local resident population is positive.

There is a long-term negative correlation between economic vitality and local residents' living index and local unemployment rate. According to the test results (see Appendix 1), we can build the VEC model as

$$\Delta Y_t = \alpha ECM_{t-1} + \sum_{i=1}^{p-1} \Gamma_i \Delta Y_{t-1} + \varepsilon_t$$

The specific coefficients are described as follows:

$$\Delta LY_t = \begin{bmatrix} 0.005 \\ 0.089 \\ 0.077 \\ -0.018 \\ 0.234 \\ 0.043 \end{bmatrix} + \begin{bmatrix} -0.459 \\ -0.061 \\ 0.130 \\ 0.125 \\ -0.052 \\ -0.201 \end{bmatrix} \Delta LY_{t-1} + \dots + \begin{bmatrix} 0.004 \\ 0.088 \\ 0.076 \\ -0.018 \\ 0.233 \\ 0.043 \end{bmatrix} VECM_{t-1} + \varepsilon_t.$$

In the formula

$$LY_t = (LY1_t, LY2_t, LY3_t)',$$

the last remainder is

$$VECM_{t-1} = \ln gdp - 0.73 \ln travel - 0.77 \ln travel + 1.08 \ln index - 0.23 \ln pop + 0.89 \ln worklose + 4.21937.$$

used to build the EVC model.

According to the AIS-SC criterion, this model is a third-order lag model. And the VAR (3) model should be established. The parameters of the model based on the OLS estimation are shown in Table 18.

3) Analysis of the VEC Model

Before analyzing the model, we need to use the AR root graph method to test the stability of the model. According to the experimental outcomes, the impulse response of VEC model is given. And the long-term and short-term effects of policy implementation on economic vitality are given under certain circumstances.

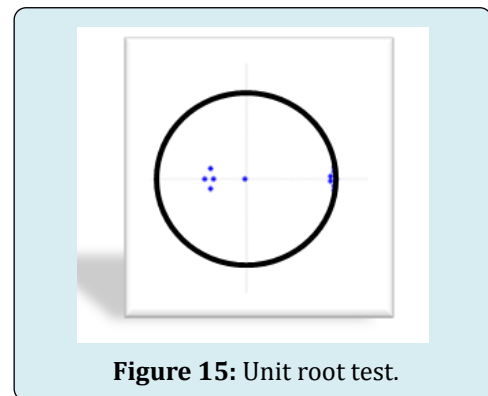


Figure 15: Unit root test.

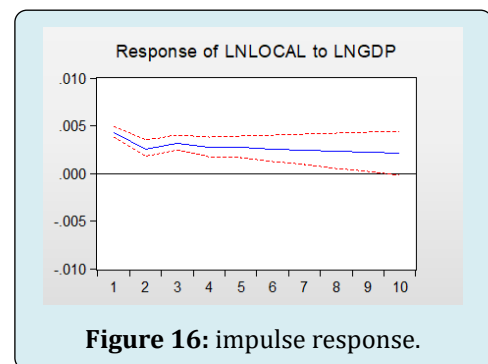


Figure 16: impulse response.

Figure 15 is the AR root test. The absolute value of the root is less than one. All the roots are in the plane of the unit circle, and the stability test of the model is passed. The impulse function is applied to the model to observe the long-term and short-term effects of economic policies on economic vitality.

It can be seen from Figure 16 that the promotion effect of economic policies on economic vitality gradually declines after 1-3 periods. And it has increased since the third period. Because the experience of implementation after the implementation of economic policies can be applied, which has a secondary effect. After the fourth period, the promoting the effect gradually decreased. The decreasing trend was relatively slow. And the long-term positive correlation effect continued.

Principal component index system model

To build a measurement model to measure the vitality of regional economy. Firstly, we establish a scientific, economic

vitality index system as the standard of data selection. Secondly, the minimum average difference method is used to screen the data. And the index is initially extracted. Further, the element analysis the method is used to select the main influencing factors. Finally, the comprehensive score of each factor is weighted to give the ranking of urban economic vigor.

The construction principle of index system of economic vitality

To select effective data to measure the economic vigor of each city, the following five theory s are given in this paper. The general process is as follows:

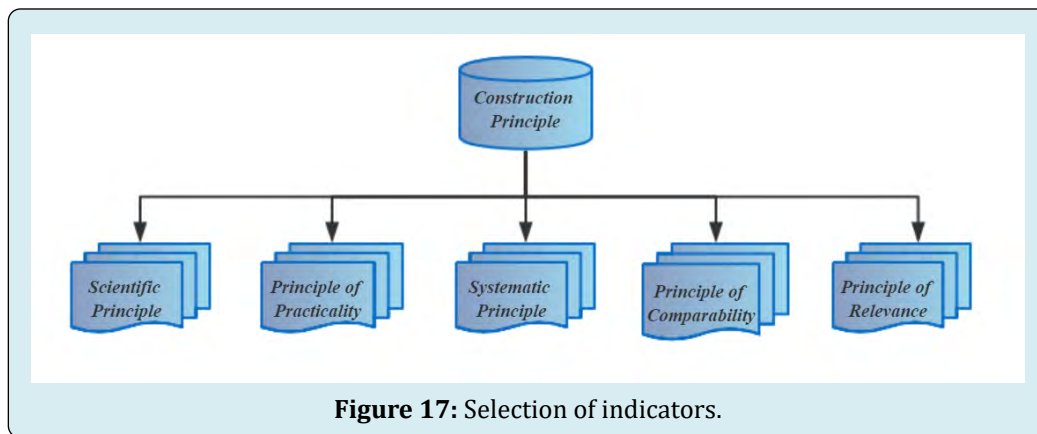


Figure 17: Selection of indicators.

- 1) Scientific Principle:** The selection of measurement indicators must be based on scientific principles, and can truly and objectively reflect the influence of various factors on urban economic vitality. The scientific comprehensive index evaluation system of urban economic vigor is the basis of correct analysis and evaluation of regional economic vigor.
- 2) Principle of Practicability:** The construction of evaluation index system is mainly theoretical analysis, which will be affected by the data sources of each index in practical application. Therefore, the availability and reliability of data sources should be ensured in reselecting indicators.
- 3) Systematic Principle:** There should be a certain logical relationship between indicators, which should not only report economic vitality from different aspects.
- 4) Principle of Comparability:** The data of each city should conform to comparability, so the data of each city can be compared horizontally and vertically.
- 5) Principle of relevance:** The comprehensive evaluation index system of local economic vitality should be an

organic combination of a series of related indexes.

Data filtering

The minimum mean square deviation method is used to screen the preliminary data. The observation value is x_{ij} , where i is the number of evaluation objects, i.e., the number of cities, j is the number of evaluation indexes, there are 19 cities, each city has 14 indexes. First, the average value and mean square deviation of index j are calculated.

$$\begin{cases} \bar{x}_j = \frac{1}{n} \sum_{i=1}^n x_{ij}, \\ S_j = \sqrt{\frac{1}{n} \sum_{i=1}^n (x_{ij} - \bar{x}_j)^2}. \end{cases}$$

Then the minimum mean square deviation of all indexes is calculated, such as:

$$S_{j_0} = \min_{1 \leq j \leq m} \{S_j\}$$

If the minimum mean square deviation is close to 0, then the index x_j corresponding to S_j can be eliminated and

calculated in turn.

Finally, nine indexes meeting the requirements can be opted from 14 indexes, namely, local GDP, financial expenditure, the added value of the primary industry, the added value of the tertiary industry, real estate investment, number of college students, population, per capita wage and road traffic noise level.

Factor Analysis

Using the factor analysis method, the extracted nine indicators, including 190 sample data from 19 cities in 2009-2020 are dimensioned down. And then the coefficient matrix is multiplied by the standardized element to calculate the score and find out the factors that have the greatest impact on economic vitality.

$$F_i = \alpha_{i1}x_1 + \alpha_{i2}x_2 + \dots + \alpha_{ip}x_p, (p = 1, 2, \dots, m).$$

Where F_i is the score of the i factor; x_1, x_2, \dots, x_p is the standardized value of the index; the corresponding coefficient is the component score coefficient;

The total element score is equal to the weighted arithmetic mean of the scores of each factor, that is

$$F = \sum_{i=1}^{10} b_i F_i$$

Where is the total factor score, F_i is the score of the first influencing element; B_i is the contribution of the first element, and factor contribution = variance contribution rate / total variance interpretation after the element rotation.

Measurement of the economic vitality of regional cities

Before measuring the economic vigor of each city, the relationship between variables and element analysis is further verified through the variance of common factors.

	Initial	Extraction
Local GDP	1.000	0.943
Financial expenditure	1.000	0.923
Primary industry	1.000	0.730
The tertiary industry	1.000	0.965
Real estate investment	1.000	0.826
Population size	1.000	0.908
Per capita wage	1.000	0.908
Road traffic noise level	1.000	0.725

Table 13: Common factor variance extraction.

The common factor variance can effectively reflect the strength of its interpretation ability.

The larger the common element variance extracted between variables, the stronger the ability to be interpreted by the common factor.

Most of the variable factors proposed by the extracted common element variance are explained to a higher degree than 70%.

Therefore, the extraction effect is better, the information of the original data loss is less, and the data extracted is more reliable.

For the element whose characteristic root is greater than 1, data analysis is carried out based on SPSS software and two factors are finally obtained, as shown in the table below, with the explanation of total variance.

Component	Total	Cumulative %	Cumulative %
1	4.196	46.618	41.315
2	2.390	73.174	73.174
3	0.940	83.622	
4	0.859	93.168	
5	0.403	97.641	
6	0.147	99.271	
7	0.048	99.807	
8	0.017	100.00	
9	2.134E-16	100.00	

Table 20: Total variance.

From Table 20, it can be seen that the cumulative variance contribution rate is 73.174%, indicating that the first two factors contain 73.174% of all indicator information. And the extracted information is large and highly representative. Therefore, it can be seen that element analysis is effective in extracting original variable information.

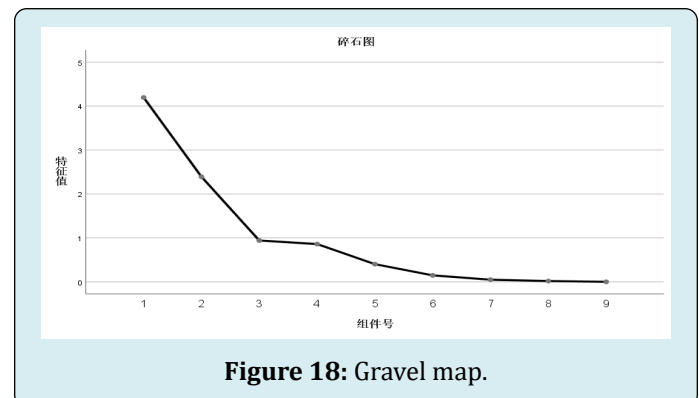


Figure 18: Gravel map.

It can also be seen from the gravel map that the information contributed by the first two factors in the overall influence elements represent that the broken line is relatively steep. And the slope of the broken line is relatively gentle after that, so it can be considered that the two factors extracted are relatively reasonable.

Level	1	2
Local GDP	0.877	-0.418
Financial expenditure	0.837	-0.472
Primary industry	0.338	0.785
The tertiary industry	0.838	-0.511
Real estate investment	0.907	-0.058
College Students	0.328	0.221
Population size	0.700	0.647
Per capita wage	0.700	0.647
Noise level	0.002	-0.475

Table 21: Component matrix.

It can be seen that the primary industry, tertiary industry, college students, population, and road traffic noise level are factor 1, which reports the level of social production and security. Therefore, element 1 can be named as social production and security factor; local GDP, financial expenditure, real estate investment, and per capita wage are element 2, which reflects the government regulation and control. Therefore, the element two is called the government regulation element. The contribution rate of elements is analyzed by the method of normal maximization variance. And the conversion correlation coefficient is obtained, which shows the correlation of two factors.

Component	1	2
1	0.858	0.514
2	-0.514	0.858

Table 22: Component transformation matrix.

It can be seen from Table 22 that in the component transformation matrix, the value of component one has changed, and the value of component two has also changed. It is necessary to extract the component matrix of the factor load matrix.

Name	1	2
Local GDP	0.269	-0.043
Financial expenditure	0.273	-0.067
Primary industry	-0.100	0.323
The tertiary industry	0.281	-0.081
Real estate investment	0.198	0.090

Table 23: Component score coefficient matrix.

According to the component score coefficient matrix, local GDP, fiscal expenditure, tertiary industry, tertiary industry, and real estate investment have a positive impact on the ranking; the primary industry hurt the ranking. The expression of each influence factor is given according to Table 23.

$$F_1 = 0.269x_1 + 0.273x_2 - 0.1x_3 + 0.281x_4 + 0.198x_5 - 0.02x_6 + 0.04x_7 + 0.04x_8 + 0.102x_9,$$

$$F_2 = -0.043x_1 - 0.067x_2 + 0.323x_3 - 0.081x_4 + 0.09x_5 + 0.119x_6 + 0.318x_7 + 0.318x_8 - 0.170x_9.$$

Taking the variance contribution rate of each factor as the weight, the weighted analysis is carried out. After the weighted average, the growth index scores are as follows:

$$ECO_{it} = 0.42315F_1 + 0.31859F_2.$$

The final weight value of each influencing factor is attained by the factor analysis. And the comprehensive score of each element is obtained by element score weighting function. The element ranking and comprehensive element ranking of each city are shown in Table 24.

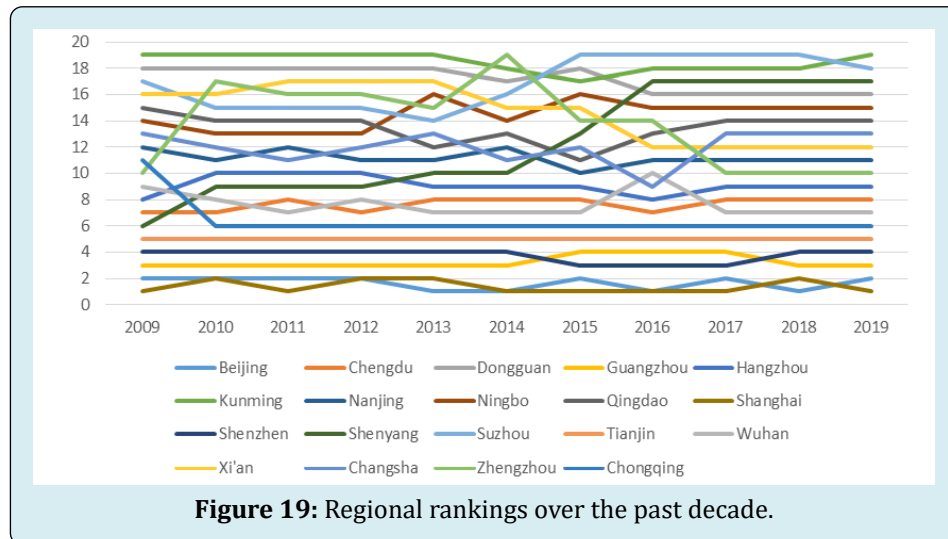
Ranking	Region	F1	F2	ECO
1	Shanghai	3.6862	-0.39976	1.395594
2	Beijing	3.29621	-0.30356	1.265118
3	Shenzhen	1.74076	-1.65827	0.190887
4	Guangzhou	1.44806	-0.04957	0.582473
5	Tianjin	0.95879	-0.03063	0.386366
6	Chongqing	0.71899	4.61688	1.767943
7	Wuhan	0.6182	0.05686	0.273524
8	Chengdu	0.41483	0.93521	0.469336
.
13	Changsha	-0.08978	-0.2578	-0.11923
14	Qingdao	-0.11201	-0.13905	-0.09058
15	Ningbo	-0.2036	-0.56477	-0.26405
16	Dongguan	-0.45746	-0.10278	-0.22174
17	Shenyang	-0.55388	-0.49867	-0.38771
18	Kunming	-0.72876	-0.11422	-0.33748
19	Suzhou	-0.8454	-0.05926	-0.36816

Table 24: Score ranking.

It can be seen from the ranking table that the cities such as Beijing, Shanghai, and Guangzhou rank the second, third

and fourth respectively in the ranking, which indicates that the central economic zone of the country has high stability and is not easy to change. The highest ranking is Chongqing.

Shenyang is ranked next, and the transfer of its industrial center may be one of the reasons for this outcome.



It can be seen from Figure 19 that the ranking of Kunming and Ningbo fluctuates greatly. Considering that the local industrial structure is not obvious enough, it is necessary to strengthen the industrial structure adjustment to improve its economic vitality. Shenyang's ranking is declining year by year, which may also be related to local policies and development strategies. So it needs to be noticed in time.

Comparative analysis of factors affecting economic vitality

In the above, according to the factor analysis method, two main elements that affect economic vitality are social production and security elements and government regulation factors, which have a positive correlation with economic vitalities.

According to the nine influencing factors opted above, the secondary industry, house price, total retail sales of social goods, number of hospitals, and number of post offices all have a positive impact on the economic vitality. The comparative analysis is made on each element to see if there is any difference.

1) Model Establishment

To test the accuracy of the index system established to measure economic vitality, considering that the individual effect of each index is not observable and the time effect is not observable, a panel data model is established to test it. And the following model is established:

$$eco_{it} = \alpha_i + \lambda_t + x_{it}\beta + \varepsilon_{it}.$$

In the formula, eco_{it} is a comprehensive index system to measure economic vigor, x_{it} is an independent variable of N rows and K columns. The factors affecting economic vitality can be divided into

- Social security system: Number of hospitals and Post offices
- Processing and production: The secondary industry
- Consumption level: house price, total retail sales of social goods

2) Descriptive statistics

To analyze the regional economic vitality more specifically, it is necessary to understand the distribution characteristics of each data.

Through descriptive statistical analysis of the data, the basic information of each variable (Including sample number, mean value, standard deviation, minimum value and maximum value) is obtained as shown in Table 25.

To dissected the regional economic vitality more specifically, it is necessary to understand the distribution characteristics of each data.

Through descriptive statistical analysis of the data, the basic information of each variable (Including sample number, mean value, standard deviation, minimum value and maximum value) is obtained as shown in Table 25.

Variable	N	Mean	Std.Dev	Min	Max
ECO	190	0.0378	0.52172	-0.69594	1.76794
The secondary industry	190	4121.7130	1882.6090	824.59	9732.54
housing price	190	10072.9401	6383.3838	3442.00	47936.00
Total retail sales	190	4194.3943	2340.76137	956.40	12668.70
Number of hospitals	190	402.517	279.8720	101.0	1606.0
Number of post offices	190	1048.345	1847.4835	131.0	16374.0

Table 25: Sample description.

It can be seen from Table 25 that the average value of eco is close to 0, indicating that the statistical effect is very good.

The fluctuation of the house price is large, which is in line with China's national conditions.

The number of hospitals is quite different, which deserves the attention of local government.

The number of post offices is on the high side in some areas, resulting in wastes of resources.

3) Correlation analysis

Table 25 is the basic situation of the data. After the description and statistics of the data, the correlation analysis

of the data is carried out. If the correlation of some indicators is too low, it may lead to the low chi-square significance value, which needs to be screened. Then, the Pearson correlation coefficient is opted to measure the correlation between the variables.

If the correlation between the illustrated variables and the explained variables is high, the study of the model is intentional. However, if the correlation between explanatory variables is too high, it may lead to collinearity among variables, which may affect the outcomes of the model. The following studies the correlation between the two variables. And the tests is significant.

Correlation	ECO	The secondary industry	Housing price	Retail sales	Number of hospitals	Number of post offices
ECO	1	0.728	0.287	0.842	0.723	0.732
The secondary industry	0.728	1	0.517	0.737	0.346	0.548
Housing price	0.287	0.517	1	0.555	0.151	0.345
Retail sales	0.842	0.737	0.555	1	0.320	
Number of hospitals	0.723	0.346	0.151	0.320	1	0.482
Number of post offices	0.732	0.548	0.345	0.661	0.482	1

Table 26: Correlation Analysis.

From the correlation analysis outcomes of Table 26, it can be concluded that the correlation coefficients between all explanatory variables and the interpreted variables are significant, and there is no strong correlation between the explanatory variables.

Therefore, there is no multicollinearity between the explanatory variables. To further study the collinearity among the validation variables. The model was validated by using the VIF test. And the outcomes are shown in Table 27.

	t	Saliency	Tolerance	VIF	1/VIF
Constant	-36.622	0.000			
Added-value of Secondary industry	5.175	0.000	0.404	2.473	0.404
Housing price	-3.072	0.000	0.513	1.950	0.513
Number of Hospitals	19.921	0.000	0.581	1.720	0.581

Table 27: VIF test results.

It can be seen from the table that the VIF value of the explanatory variable and the control variable is less than 5. That is to say, the multicollinearity among the variables is low, which will not have a great impact on the outcomes of

the model.

Therefore, the following modeling and regression analysis can be continued. Continue with the residual analysis

	Sum of squares	Freedom	Mean square	F	Saliency
Regression	48.802	5	9,760	679.722	0.000
Residual	2.642	184	0.014		
Total	51.444	189			

Table 28: VIF test results.

From the analysis of variance, it can be seen that the F value is far greater than 1, which shows that the differences among the factors are statistically significant. The interaction effect among the factors is more significant. Fixed effect model and mixed model are tested by F test, random effect model and mixed model are tested by BP test, stable effect model and random effect model are tested by the Hausman test, and they are compared:

F test		BP test		Hausman test	
Detection value	p	Detection value	p	Detection value	p
9.46	0	3041.69	0	125.3	0

Table 29: Residual analysis results.

According to the model test results, if the p -value corresponding to the F test is 0, less than 0.05, it means that the fixed effect model is due to the mixed model.

If the p -value corresponding to the BP test is also 0, less than 0.05, it means that the random effect model is better than the mixed model.

If the p -value corresponding to the Hausman test is 0, it means that the fixed effect model tends to be selected. See Table 30 for regression outcomes of fixed effect model to be opted after inspection

ECO	Coef	p
F1	0.41315	0
F2	0.31859	0
Added-value of secondary industry	0.000659	0
Housing price	0.00893	0.0007
Retail sales of social goods	0.0156	0.001498
Number of hospitals	0.00755	0.135
Number of post offices	0.00149	0.043

Table 30: Fixed effect regression results.

From Table 30, we can see the regression results of the model. And the fixed effect model is opted after the test. The correlation coefficients of the first principal component, the second principal component, the second industry, the house price, the retail sales of social goods, the number of hospitals, and the number of post offices are all positively correlated with Eco. These indicate that they all have a positive impact on economic vitality. From the perspective of economic vigor, the secondary industry, house price, retail sales of social goods, and hospitals, and number of post offices are all positively related to economic vigor. In these variables, when one variable changes, the other variables remain unchanged. Then the economic vigor changes in the same direction. Therefore, it can be further proved that the economic vigor index system constructed in this paper can accurately measure it.

A Development Plan Based on the Perspective of the Decision-Maker

This section first reviews questions 1 to 3 above and obtains the general universality of the model established in this paper. Finally, according to the outcomes, it proposes measures conducive to improving economic vitality and promoting economic growth [20-21].

Conclusion review

From question 1 to question 3, we can roughly divide the index system of urban economic vitality into indicators of economic growth, indicators of attractiveness to capital and production factors, indicators of employment and residents' quality of life, indicators of innovation capacity, and indicators of intellectual property protection.

Which chose the per capital GDP, fiscal revenue, education and human capital, income levels, employment, innovation, and intellectual property rights protection for data collection, processing, modeling and analysis, and it can provide indicators and economic vitality all remain positive correlation. Therefore, we can dissect from the perspective

of the above and advise the sustainable development of the economic vigor of benign and stronger regional competitiveness.

Suggestions on the benign sustainable development of Beijing's economic vitality

Economic vitality includes not only the speed, stability, and outcomes of economic growth, but also the average quality of life of the people, such as the level of education and health standards, as well as the overall progress of the economic structure and social structure.

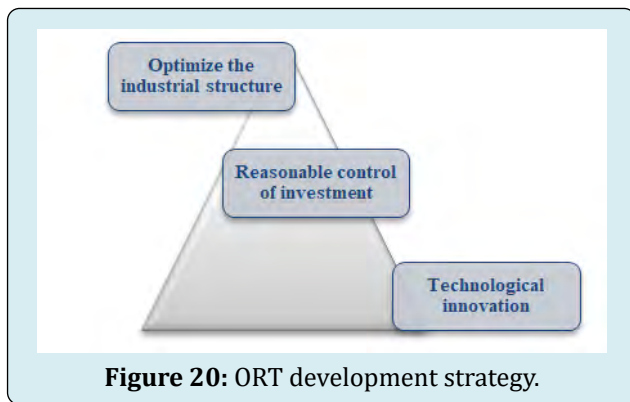


Figure 20: ORT development strategy.

Given the excessive factors affecting economic vitality, we roughly divide the policy into three parts, including optimizing industrial structure (O), rationally controlling investment intensity (R) and technological innovation (T), namely ORT development strategy.

Optimizing the industrial structure

1) Vigorously developing the tertiary industry

The third industry is an important indicator of a country's economic development. And the tertiary industry has the characteristics of less investment, short cycle, quick effect, and high wages of employees.

Vigorously developing the tertiary industry can rapidly expand employment fields and jobs, avoid labor surplus, and improve residents' income. For modern cities, residents not only have material needs but also pursue spiritual level. This growth trend promotes the region to continuously develop new industries to meet the needs of the people, to improve residents and to improve the quality of life. Therefore, we vigorously develop the tertiary industry, which has a significant role in promoting the sustainable development of economic vitality.

2) Strengthening the development of primary and secondary industries

For the adjustment of Beijing's economic structure and the promotion of its regional competitiveness, it is necessary

to develop the tertiary industry while strengthening the primary industry and expanding the scale of the secondary industry. The first industry is the basic trade of the national economy, strengthening the first industry, and laying the foundation for the development of the second industry and the third industry.

Reasonable control of investment

Investment is an important part of GDP but also an element of economic vitality. The growth of investment is of great significance to the promotion of it. In China, investment is mainly divided into a private investment, government investment, and foreign investment. From the perspective of Beijing, as a first-tier city, a large number of foreign enterprises and state-owned enterprises invest in Beijing in various forms. However, the unreasonable investment may cause the princess of resources, leading to an imbalance of social and economic development. Therefore, Beijing should control the scope of investment and improve the efficiency of investment.

Technology innovation

Science and technology are the primary productive forces, and innovation is a force that can not be ignored to drive economic development. Innovation is conducive to the optimization and transformation of China's economic growth mode. Economic vitality comes from the sound growth of the economy.

We should strengthen the policy support for the investment in science and technology of enterprises, guide the flow of resources such as projects, funds, and talents to enterprises, and establish an innovation support system with enterprises as the main body.

Cultivate and develop the next generation Internet, new generation mobile communication, Internet of things, navigation and location services, biomedicine, and other high-tech strategic emerging industries. Accelerate the construction of high-end talents gathering special zone, and actively introduce and cultivate high-end talents.

Model Evaluations

Advantages

The advantages and disadvantages of model factor analysis and panel data model are analyzed.

1) **Factor analysis:** Through dimensionality reduction of a variety of influence indicators, the main elements are extracted from the complex elements, and a few factors are used to describe the relationship between many indicators that is, several closely related indicators are classified into the same category, each category of

indicators becomes a factor and the economic vitality is measured by a few factors. It simplifies the problem, measures most of the information of it, and gets more scientific and accurate information at the same time.

- 2) **Panel data model:** Compared with the traditional time series model, the panel data model can provide more data points, increase the degree of freedom of data and reduce the degree of collinearity between explanatory variables, thus improving the effectiveness and accuracy of model estimation; Panel data model is more conducive to reflect the randomness of the gap between individuals. In this paper, panel data model can not only report the information between the given factors, but also report the information of a certain factor through the study of other influencing factors.

Improvements needed

When using the panel data model to study influence factors, there are some difficulties in variable design and data collection, some errors in factor prediction, and selection difficulties in influence factors; panel data analysis of time series of factors is short, which can only reflect the data characteristics in the short term, not the long-term changes of factors.

Conclusions and Recommendations

This paper establishes three models, namely panel data model (fixed effect model and random effect model), var-vec model and principal component index system construction model. The var-vec model has great generalization. The applicable fields are

- 1) VaR Based Research on agricultural economic development. Because of its unique ability of testing dynamic fluctuation, AVR can solve the research difficulty of agricultural economy which is greatly affected by seasonal.
- 2) Oil price evaluation. International oil has been affected by many factors, among which the fluctuation of international political content has a greater impact. Using VAR model can highlight the impact of oil price changes in the short term and make adjustments at any time.
- 3) The new decline of real estate has an important impact on the national economy. Choosing appropriate research methods will provide a new solution to this kind of problem.
- 4) Var can also be used for monetary policy analysis to study the long-term and short-term impact of changes in money supply and interest rate on economic fluctuations and their contribution.

Especially in the context of the global epidemic, the economic growth situation and economic growth potential of various countries are issues that need special attention.

For a country, the epidemic outbreak may present a point like outbreak trend, and the relationship between the regional epidemic development trend and the regional economy is also inseparable.

In the future epidemic prevention and control, we can establish the relevant panel data model and VAR-VEC model, and use the relevant local economic indicators to model and analyze how to stabilize the local economy and promote the national economy.

Conflict of Interest

We have no conflict of interests to disclose and the manuscript has been read and approved by all named authors.

Acknowledgement

This work was supported by the Philosophical and Social Sciences Research Project of Hubei Education Department (19Y049), and the Staring Research Foundation for the Ph.D. of Hubei University of Technology (BSQD2019054), Hubei Province, China.

References

1. Eltony M N, Mohammad Al Awadi (2001) Oil Price Fluctuations and Their Impact on the Macroeconomic Variables of Kuwait: A Case Study Using a VAR Model. *International Journal of Energy Research* 25(11): 939-959.
2. Dimitris K Christopoulos, MA León Ledesma (2008) Testing for Granger (non-)causality in a time-varying coefficient VAR model. *Journal of Forecasting* 27(4): 293-303.
3. Xiaohong Chen, Han Wen qiang (2005) Pricing of Credit Guarantee for Small and Medium Enterprises Based on the VaR Model. *Systems Engineering* 15(3): 36-41.
4. Alsaman Z (2016) Oil price uncertainty and the U.S. stock market analysis based on a GARCH-in-mean VAR model. *Energy Economics* 59: 251-260.
5. Tan F, Zhaohua Lu (2015) Study on the interaction and relation of society, economy and environment based on PCA-VAR model: As a case study of the Bohai Rim region, China. *Ecological Indicators* 48: 31-40.

6. Chen R D, Yu Lean (2009) Nonlinear VaR model of FX options portfolio under multivariate mixture of normal distributions. *System Engineering Theory and Practice* 29(12): 65-72.
7. Fan (2013) Study on China's Import and Export Growth Rate Based on VAR Model. *Lecture notes in electrical engineering* 16(2): 126-134.
8. Trevisan M, Errera G, C Vischetti, Walker A (2000) Modelling pesticide leaching in a sandy soil with the VARLEACH model. *Agricultural Water Management* 44(3): 357-369.
9. Ugalde J Anduaga, Martínez F, Iturrospe A (2015) Novel SHM method to locate damages in substructures based on VARX models. *Journal of Physics: Conference Series* 628: 12-13.
10. Monchen Guido, Siquin B, Verhaegen MHG (2019) Recursive Kronecker-Based Vector Autoregressive Identification for Large-Scale Adaptive Optics. *IEEE Transactions on Control Systems Technology* 27(4): 1677-1684.
11. Varnik F, Bocquet L, Barrat J L, Berthier L (2003) Shear Localization in a Model Glass. *Phys Rev Lett* 90(9): 095702.
12. Wu Wan Shu, R James Purser, David F Parrish (2002) Three-Dimensional Variational Analysis with Spatially Inhomogeneous Covariances. *Monthly Weather Review* 130(12): 2905-2916.
13. Alexander Gordon J, Alexandre M Baptista (2004) A Comparison of VaR and CVaR Constraints on Portfolio Selection with the Mean-Variance Model. *Management Science* 50(9): 1261-1273.
14. Essery Richard, John Pomeroy, Jason Parviainen, Pascal Storck (2003) Sublimation of Snow from Coniferous Forests in a Climate Model. *Journal of Climate* 16(11): 1855-1865.
15. John PA Ioannidis, Stanley T D, Hristos Doucouliagos (2017) The Power of Bias in Economics Research. *The Economic Journal* 127(605): 236-265.
16. Lei Sun (2020) Driving Mechanism of the Coordinated Development of Regional Economy-Society-Environment System Based on Grey Incidence Analysis Model-A Case Study of Wanjiang Urban Belt. *Modern Economy* 11(7): 1226-1244.
17. Yuping Hu, Sanying Feng, Jing Zhao (2020) Test for the covariance matrix in time-varying coefficients panel data models with fixed effects. *Journal of the Korean Statistical Society* 49(2): 159-168.
18. Rodnyansky DV, Makarov I N, Ovodova A S, Avtsinova A A, Ryazantseva E A (2020) Increasing the Competitiveness of Universities and Research Institutions and Their Impact on the Regional Economy Development. In: *Proceedings of the 2nd International Scientific and Practical Conference "Modern Management Trends and the Digital Economy: from Regional Development to Global Economic Growth*, pp: 313-319.
19. Giorgio Gnecco, Federico Nutarelli, Daniela Selvi (2020) Optimal trade-off between sample size, precision of supervision, and selection probabilities for the unbalanced fixed effects panel data model. *Soft Computing* 24(21): 15937-15949.
20. Oluwasheyi S Oladipo (2020) Migrant Workers' Remittances And Economic Growth: A Time Series Analysis. *The Journal Of Developing Areas* 54(4): 75-88.
21. Jong Suk Han, Jong Wha Lee (2020) Demographic change, human capital, and economic growth in Korea. *Japan and the World Economy* 53(2): 79-87.

