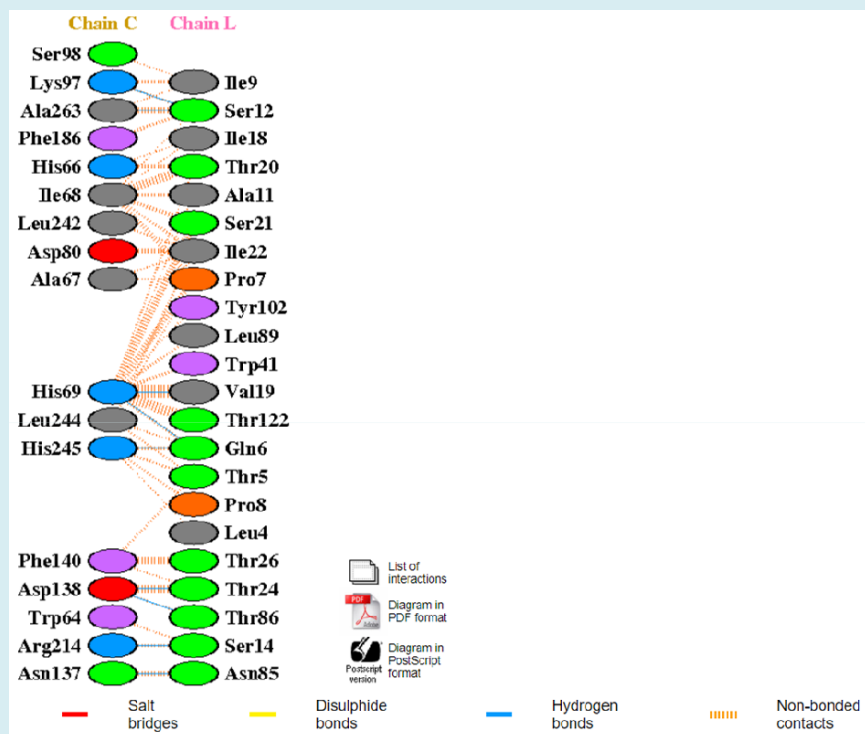
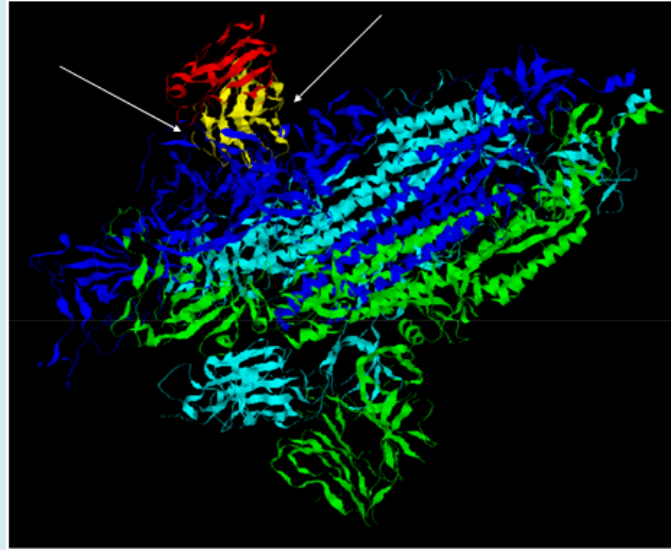


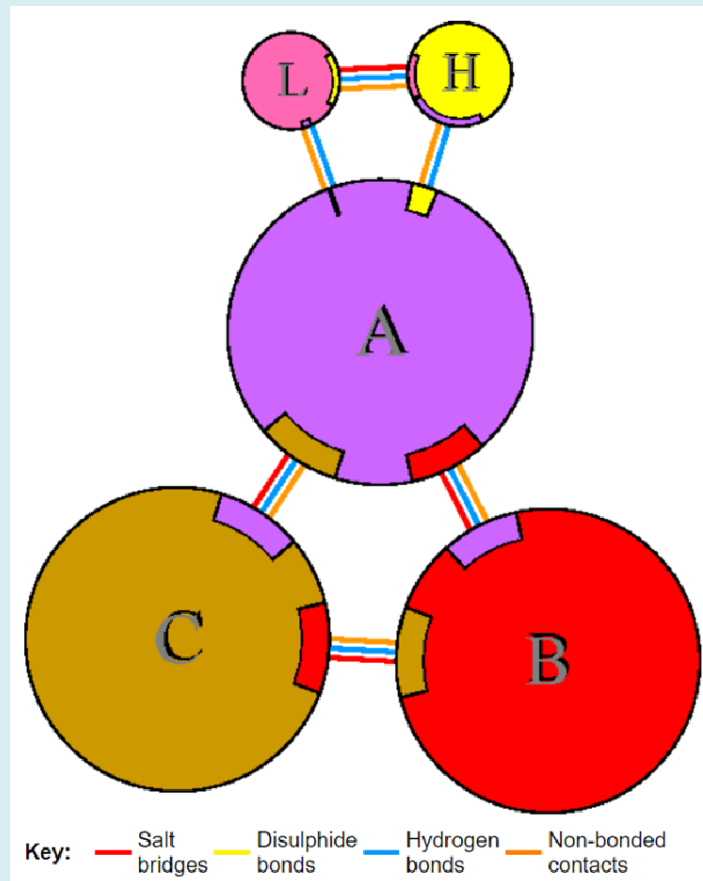
Supp. Figure 1: Interactions between the Spike protein (C chain) of SARS-CoV-2 Wuhan isolate and light chain of the It28 antibody showing the presence of hydrogen bonds and non- contact bonds.



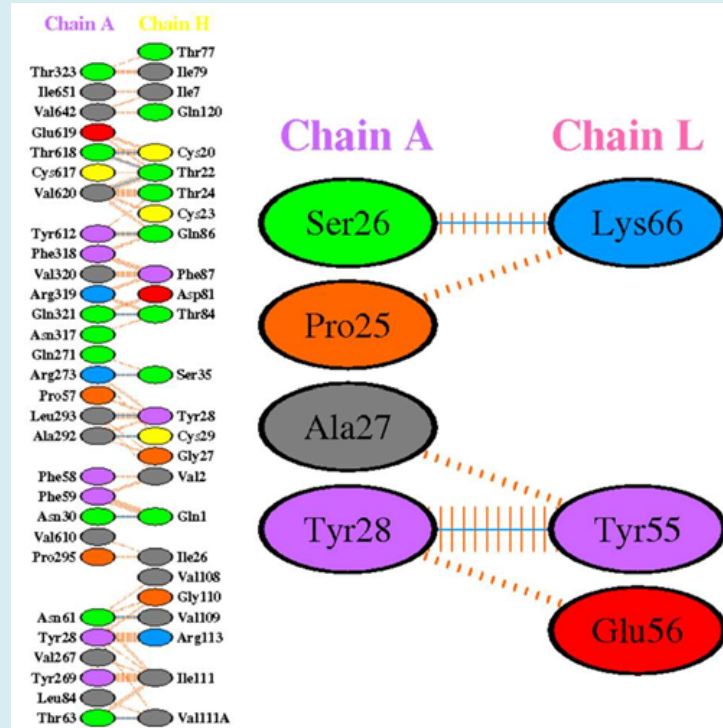
Supp. Fig. 2: Details of interactions between the amino acid groups of the C chain of Spike protein (Wuhan isolate) with the light chain amino acids of the It28 antibody.



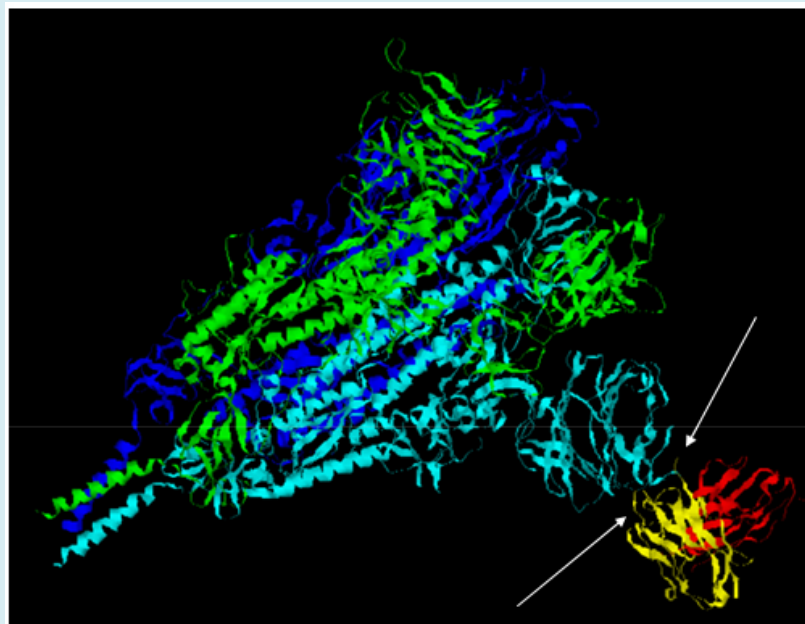
Supp. Fig. 3: The interaction between the heavy and light chain of It28 antibody (*red and yellow*) with the chain-A of the Gamma variant SARS-CoV-2 (*dark blue chain*).



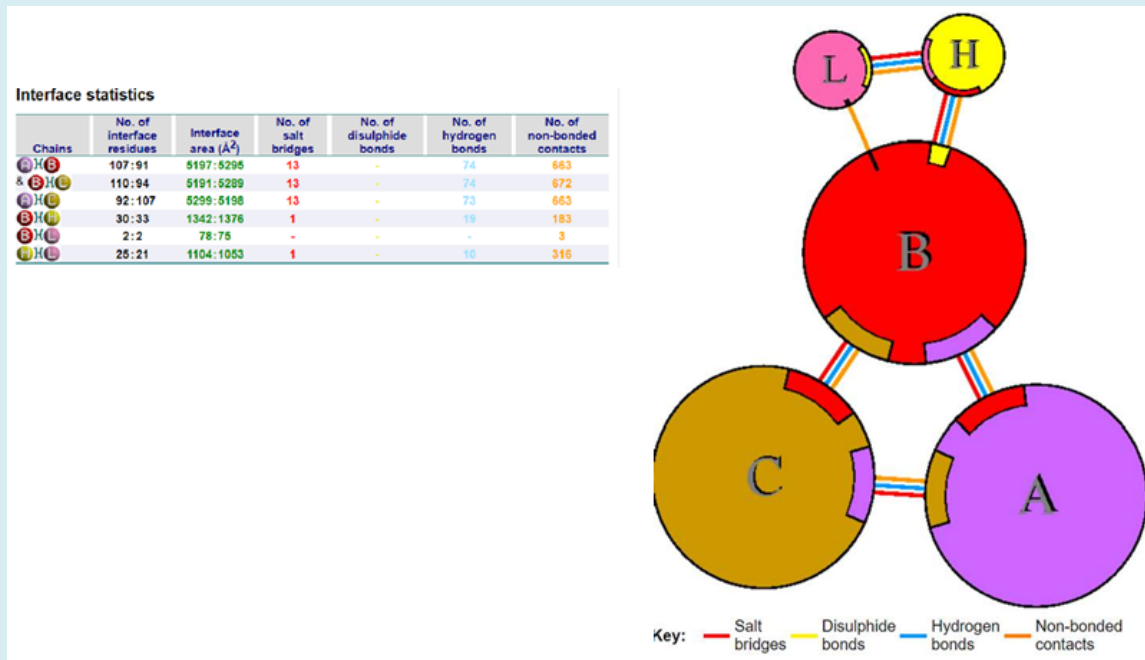
Supp. Fig. 4: Interactions between the Spike protein of Gamma variant, indicating the presence of hydrogen bonds and non-contact bonds.



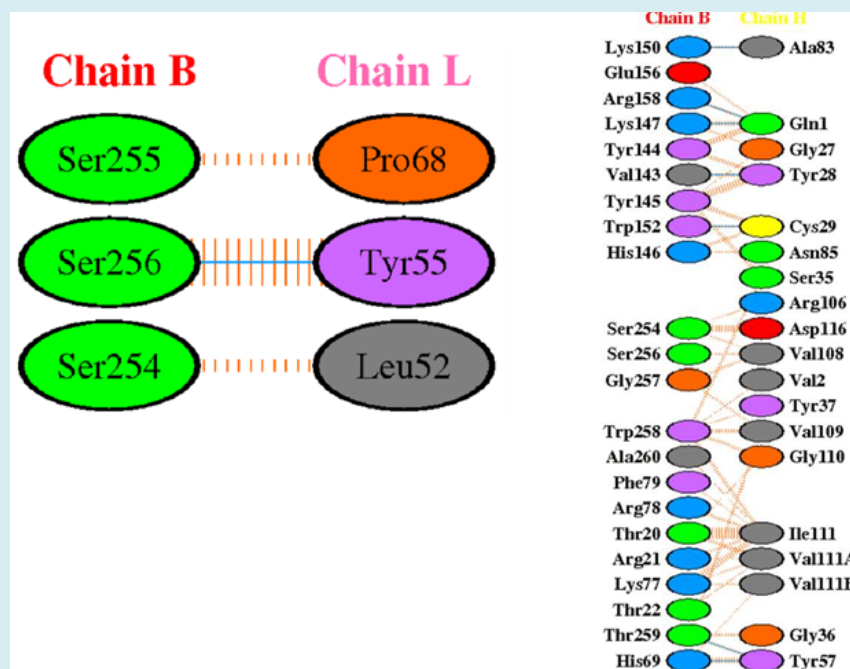
Supp. Fig. 5: Details of interactions between the amino acid groups of the A chain of the Spike protein (Gamma variant) with the heavy and light chain amino acids of the It28 antibody.



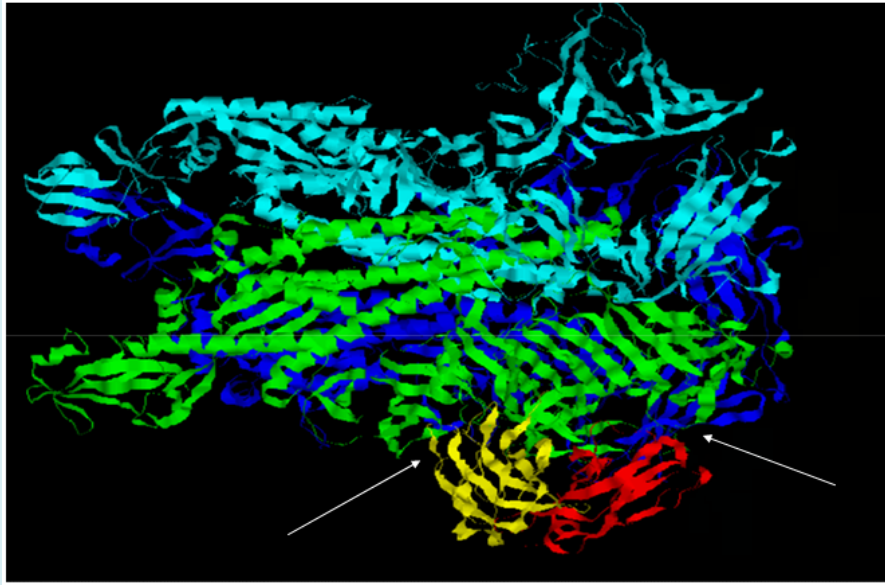
Supp. Fig. 6: The interaction between the heavy and light chain of It28 antibody (yellow and red) with the chain-B of the Beta variant SARS-CoV-2 (Light blue chain).



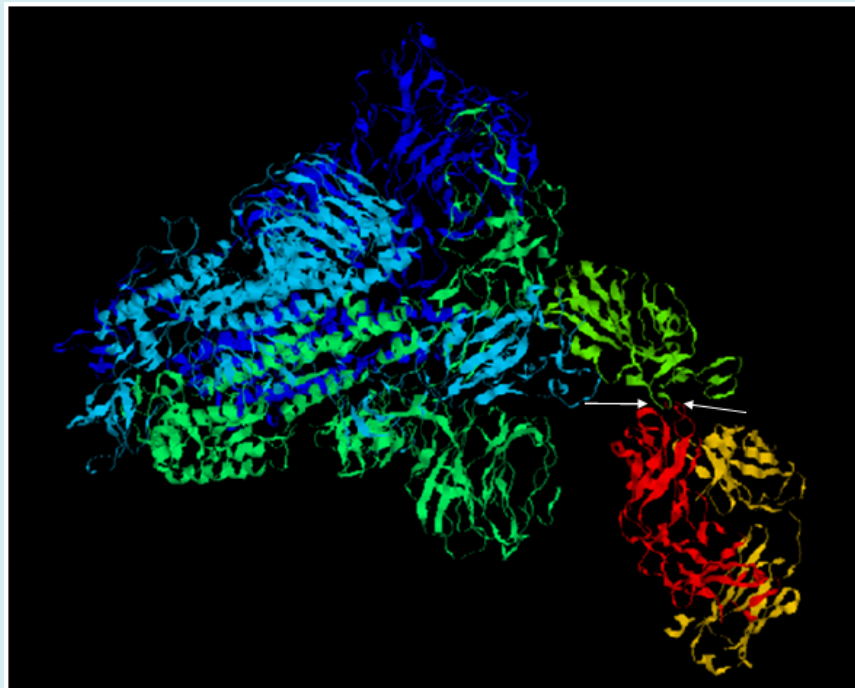
Supp. Fig. 7: Interactions between It28 antibody and Spike protein of the Beta variant.



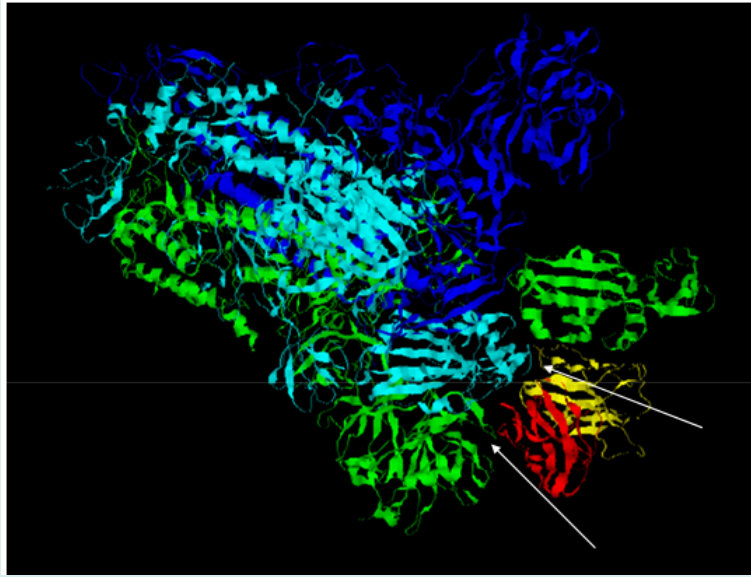
Supp. Fig. 8: Details of the interactions between the amino acid groups of the B chain of the Spike protein (Beta variant) with the heavy and light chain amino acids of the It28 antibody.



Supp. Fig. 9: The interaction between the heavy and light chain of It28 antibody (*red and yellow*) with the chain-B of the HCoV-229E (*green*).



Supp. Fig. 10: The interaction between the heavy chain of It28 antibody (*red*) with the chain-A of the SARS-CoV1 (*green*).



Supp. Fig. 11: The interaction between the heavy and light chain of It28 antibody (*red and yellow*) with the chain-C and B of the MERS-CoV (*light blue and green*).

